



UniFlood C

BVP324 54LED 40K 220V 15 DMX

UniFlood C is a circular-shaped, exterior-rated and cost-effective architectural LED floodlight that is designed for façade, landscape and outdoor flood lighting applications. The robust mechanical design and high-efficiency optical design make it ideal for illuminating multi-storey exterior facades, bridges, landmarks and monuments. Available in white, monochromatic colours, RGB, RGBW and tunable white. Six different spread lenses, ranging from narrow spot to wide flood, and a DMX512/RDM control option available to give architects and designers the freedom to explore a wide range of concepts and design with no limitations.

Warnings and Safety

- For outdoor use only

Product data

| General Information | | Flammability mark | |
|-------------------------------|--|---|--|
| Lamp colour code | Neutral white | Flammability mark | F [For mounting on normally flammable surfaces] |
| Light source replaceable | No | CE mark | CE mark |
| Number of gear units | 1 unit | Constant light output | No |
| Driver/power unit/transformer | PSDMX [Power supply unit with DMX interface] | Number of products on MCB (16 A type B) | 3 |
| Driver included | Yes | LED engine type | LED |
| Optical cover/lens type | FG [Flat glass] | Serviceability class | Class B, the luminaire is equipped with some serviceable parts (when applicable): driver, control units, surge-protection device, front cover and mechanical parts |
| Luminaire light beam spread | 15° | Operating and Electrical | |
| Control interface | Dynamic DMX/RDM | Input Voltage | 220 to 240 V |
| Connection | Flying leads/wires and 2 push-in connectors 4-pole | Input frequency | 50 to 60 Hz |
| Cable | Cable 0.5 m without plug 3-pole and 2 cables 0.5 m with connector 4-pole | Inrush current | 70 A |
| Protection class IEC | Safety class I (I) | Inrush time | 0.65 ms |

UniFlood C

| | |
|---------------------|-----|
| Power factor (min.) | 0.9 |
|---------------------|-----|

Controls and Dimming

| | |
|----------|-----|
| Dimmable | Yes |
|----------|-----|

Mechanical and Housing

| | |
|-----------------------------|------------------------------------|
| Housing material | Aluminum die-cast |
| Optic material | Polymethyl methacrylate |
| Optical cover/lens material | Tempered glass |
| Fixation material | Steel |
| Mounting device | MBA [Mounting bracket adjustable] |
| Optical cover/lens shape | Flat |
| Optical cover/lens finish | Clear |
| Overall length | 390 mm |
| Overall width | 332 mm |
| Overall height | 183 mm |
| Overall diameter | 332 mm |
| Colour | Dark Grey |

Approval and Application

| | |
|------------------------------|---|
| Ingress protection code | IP66 [Dust penetration-protected, jet-proof] |
| Mech. impact protection code | IK08 [5 J vandal-protected] |

Initial Performance (IEC Compliant)

| | |
|-------------------------------------|---------|
| Initial luminous flux (system flux) | 8350 lm |
|-------------------------------------|---------|

| | |
|--------------------------------|----------|
| Luminous flux tolerance | +/-10% |
| Initial LED luminaire efficacy | 76 lm/W |
| Lamp colour temperature | 4000 K |
| Colour Rendering Index | 80 |
| Initial chromaticity | SDCM = 4 |
| Initial input power | 110 W |
| Power consumption tolerance | +/-10% |

Application Conditions

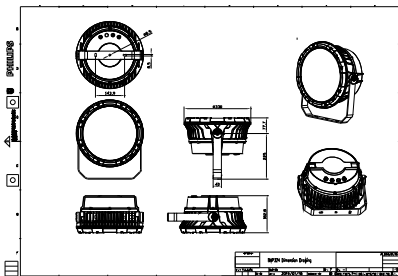
| | |
|---------------------------|---------------|
| Ambient temperature range | -40 to +50 °C |
| Maximum dimming level | 1% |

Product Data

| | |
|-----------------------------------|------------------------------|
| Full product code | 911401740952 |
| Order product name | BVP324 54LED 40K 220V 15 DMX |
| Order code | 911401740952 |
| SAP numerator – quantity per pack | 1 |
| Numerator – packs per outer box | 1 |
| Material no. (12 NC) | 911401740952 |
| SAP net weight (piece) | 10.399 kg |



Dimensional drawing



BVP321/322/323/324

UniFlood C

