



# UniFlood C

## BVP324 54LED 30K 220V 40 DMX

UniFlood C is a circular-shaped, exterior-rated and cost-effective architectural LED floodlight that is designed for façade, landscape and outdoor flood lighting applications. The robust mechanical design and high-efficiency optical design make it ideal for illuminating multi-storey exterior facades, bridges, landmarks and monuments. Available in white, monochromatic colours, RGB, RGBW and tunable white. Six different spread lenses, ranging from narrow spot to wide flood, and a DMX512/RDM control option available to give architects and designers the freedom to explore a wide range of concepts and design with no limitations.

### Warnings and Safety

- For outdoor use only

### Product data

| General Information           |   |
|-------------------------------|---|
| Lamp colour code              | Warm white  |
| Light source replaceable      | No  |
| Number of gear units          | 1 unit  |
| Driver/power unit/transformer | PSDMX [ Power supply unit with DMX interface]                               |
| Driver included               | Yes   |
| Optical cover/lens type       | FG [ Flat glass]  |
| Luminaire light beam spread   | 40°   |
| Control interface             | Dynamic DMX/RDM   |
| Connection                    | Flying leads/wires and 2 push-in connectors<br>4-pole                       |
| Cable                         | Cable 0.5 m without plug 3-pole and 2 cables<br>0.5 m with connector 4-pole |
| Protection class IEC          | Safety class I (I)  |

| Flammability mark                       | F [ For mounting on normally flammable surfaces]   |
|---|--|
| CE mark                                 | CE mark  |
| Constant light output                   | No   |
| Number of products on MCB (16 A type B) | 3  |
| LED engine type                         | LED  |
| Serviceability class                    | Class B, the luminaire is equipped with some serviceable parts (when applicable): driver, control units, surge-protection device, front cover and mechanical parts |
| Operating and Electrical                |  |
| Input Voltage                           | 220 to 240 V   |
| Input frequency                         | 50 to 60 Hz  |
| Inrush current                          | 70 A   |
| Inrush time                             | 0.65 ms  |

# UniFlood C

|                     |     |
|---------------------|-----|
| Power factor (min.) | 0.9 |
|---------------------|-----|

## Controls and Dimming

|          |     |
|----------|-----|
| Dimmable | Yes |
|----------|-----|

## Mechanical and Housing

|                             |                                    |
|-----------------------------|------------------------------------|
| Housing material            | Aluminum die-cast                  |
| Optic material              | Polymethyl methacrylate            |
| Optical cover/lens material | Tempered glass                     |
| Fixation material           | Steel                              |
| Mounting device             | MBA [ Mounting bracket adjustable] |
| Optical cover/lens shape    | Flat                               |
| Optical cover/lens finish   | Clear                              |
| Overall length              | 390 mm                             |
| Overall width               | 332 mm                             |
| Overall height              | 183 mm                             |
| Overall diameter            | 332 mm                             |
| Colour                      | Dark Grey                          |

## Approval and Application

|                              |   |
|------------------------------|---|
| Ingress protection code      | IP66 [ Dust penetration-protected, jet-proof] |
| Mech. impact protection code | IK08 [ 5 J vandal-protected]                  |

## Initial Performance (IEC Compliant)

|                                     |         |
|-------------------------------------|---------|
| Initial luminous flux (system flux) | 6370 lm |
|-------------------------------------|---------|

|                                |          |
|--------------------------------|----------|
| Luminous flux tolerance        | +/-10%   |
| Initial LED luminaire efficacy | 58 lm/W  |
| Lamp colour temperature        | 3000 K   |
| Colour Rendering Index         | 80       |
| Initial chromaticity           | SDCM = 4 |
| Initial input power            | 110 W    |
| Power consumption tolerance    | +/-10%   |

## Application Conditions

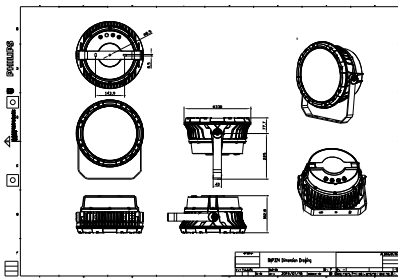
|                           |               |
|---------------------------|---------------|
| Ambient temperature range | -40 to +50 °C |
| Maximum dimming level     | 1%            |

## Product Data

|                                   |                              |
|-----------------------------------|------------------------------|
| Full product code                 | 911401740912                 |
| Order product name                | BVP324 54LED 30K 220V 40 DMX |
| Order code                        | 911401740912                 |
| SAP numerator – quantity per pack | 1                            |
| Numerator – packs per outer box   | 1                            |
| Material no. (12 NC)              | 911401740912                 |
| SAP net weight (piece)            | 10.399 kg                    |



## Dimensional drawing



BVP321/322/323/324

## UniFlood C

