



# UniFlood C

## BVP323 36LED RGBNW 220V 30 DMX

UniFlood C is a circular-shaped, exterior-rated and cost-effective architectural LED floodlight that is designed for façade, landscape and outdoor flood lighting applications. The robust mechanical design and high-efficiency optical design make it ideal for illuminating multi-storey exterior facades, bridges, landmarks and monuments. Available in white, monochromatic colours, RGB, RGBW and tunable white. Six different spread lenses, ranging from narrow spot to wide flood, and a DMX512/RDM control option available to give architects and designers the freedom to explore a wide range of concepts and design with no limitations.

### Warnings and Safety

- For outdoor use only

### Product data

General Information		Flammability mark	
Lamp colour code	Red, green, blue and white	CE mark	F [ For mounting on normally flammable surfaces]
Light source replaceable	No	Constant light output	No
Number of gear units	1 unit	Number of products on MCB (16 A type B)	4
Driver/power unit/transformer	PSDMX [ Power supply unit with DMX interface]	LED engine type	LED
Driver included	Yes	Serviceability class	Class B, the luminaire is equipped with some serviceable parts (when applicable): driver, control units, surge-protection device, front cover and mechanical parts
Optical cover/lens type	FG [ Flat glass]	<b>Operating and Electrical</b>	
Luminaire light beam spread	30°	Input Voltage	220 to 240 V
Control interface	Dynamic DMX/RDM	Input frequency	50 to 60 Hz
Connection	Flying leads/wires and 2 push-in connectors 4-pole	Inrush current	60 A
Cable	Cable 0.5 m without plug 3-pole and 2 cables 0.5 m with connector 4-pole	Inrush time	0.65 ms
Protection class IEC	Safety class I (I)		

# UniFlood C

Power factor (min.)	0.9
---------------------	-----

## Controls and Dimming

Dimmable	Yes
----------	-----

## Mechanical and Housing

Housing material	Aluminum die-cast
Optic material	Polymethyl methacrylate
Optical cover/lens material	Tempered glass
Fixation material	Steel
Mounting device	MBA [ Mounting bracket adjustable]
Optical cover/lens shape	Flat
Optical cover/lens finish	Clear
Overall length	315 mm
Overall width	262 mm
Overall height	169 mm
Overall diameter	262 mm
Colour	Dark Grey

## Approval and Application

Ingress protection code	IP66 [ Dust penetration-protected, jet-proof]
Mech. impact protection code	IK08 [ 5 J vandal-protected]

## Initial Performance (IEC Compliant)

Initial luminous flux (system flux)	3765 lm
-------------------------------------	---------

Luminous flux tolerance	+/-10%
Initial LED luminaire efficacy	47 lm/W
Lamp colour temperature	4000 K
Colour Rendering Index	-
Initial input power	80 W
Power consumption tolerance	+/-10%

## Application Conditions

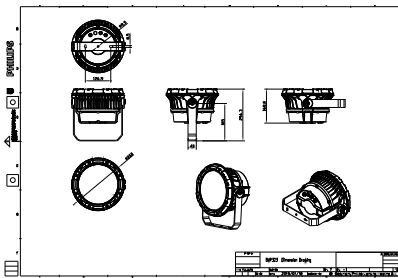
Ambient temperature range	-40 to +50 °C
Maximum dimming level	1%

## Product Data

Full product code	911401740752
Order product name	BVP323 36LED RGBNW 220V 30 DMX
Order code	911401740752
SAP numerator – quantity per pack	1
Numerator – packs per outer box	2
Material no. (12 NC)	911401740752
SAP net weight (piece)	5.199 kg



## Dimensional drawing



BVP321/322/323/324

## UniFlood C

