



UniFlood C

BVP323 36LED 40K 220V 8

UniFlood C is a circular-shaped, exterior-rated and cost-effective architectural LED floodlight that is designed for façade, landscape and outdoor flood lighting applications. The robust mechanical design and high-efficiency optical design make it ideal for illuminating multi-storey exterior facades, bridges, landmarks and monuments. Available in white, monochromatic colours, RGB, RGBW and tunable white. Six different spread lenses, ranging from narrow spot to wide flood, and a DMX512/RDM control option available to give architects and designers the freedom to explore a wide range of concepts and design with no limitations.

Warnings and Safety

- For outdoor use only

Product data

| General Information | | Number of products on MCB (16 A type B) 4 | |
|-------------------------------|--|---|--|
| Lamp colour code | Neutral white | LED engine type | LED |
| Light source replaceable | No | Serviceability class | Class B, the luminaire is equipped with some serviceable parts (when applicable): driver, control units, surge-protection device, front cover and mechanical parts |
| Number of gear units | 1 unit | Operating and Electrical | |
| Driver/power unit/transformer | PSU [Power supply unit] | Input Voltage | 220 to 240 V |
| Driver included | Yes | Input frequency | 50 to 60 Hz |
| Optical cover/lens type | FG [Flat glass] | Inrush current | 60 A |
| Luminaire light beam spread | 8° | Inrush time | 0.65 ms |
| Control interface | - | Power factor (min.) | 0.9 |
| Connection | Flying leads/wires | | |
| Cable | Cable 0.5 m without plug 3-pole | | |
| Protection class IEC | Safety class I (I) | | |
| Flammability mark | F [For mounting on normally flammable surfaces] | | |
| CE mark | CE mark | | |
| Constant light output | No | | |

UniFlood C

Controls and Dimming

| | |
|----------|----|
| Dimmable | No |
|----------|----|

Mechanical and Housing

| | |
|-----------------------------|------------------------------------|
| Housing material | Aluminum die-cast |
| Optic material | Polymethyl methacrylate |
| Optical cover/lens material | Tempered glass |
| Fixation material | Steel |
| Mounting device | MBA [Mounting bracket adjustable] |
| Optical cover/lens shape | Flat |
| Optical cover/lens finish | Clear |
| Overall length | 315 mm |
| Overall width | 262 mm |
| Overall height | 169 mm |
| Overall diameter | 262 mm |
| Colour | Dark Grey |

Approval and Application

| | |
|------------------------------|---|
| Ingress protection code | IP66 [Dust penetration-protected, jet-proof] |
| Mech. impact protection code | IK08 [5 J vandal-protected] |

Initial Performance (IEC Compliant)

| | |
|-------------------------------------|---------|
| Initial luminous flux (system flux) | 5310 lm |
|-------------------------------------|---------|

| | |
|--------------------------------|----------|
| Luminous flux tolerance | +/-10% |
| Initial LED luminaire efficacy | 66 lm/W |
| Lamp colour temperature | 4000 K |
| Colour Rendering Index | 80 |
| Initial chromaticity | SDCM = 4 |
| Initial input power | 80 W |
| Power consumption tolerance | +/-10% |

Application Conditions

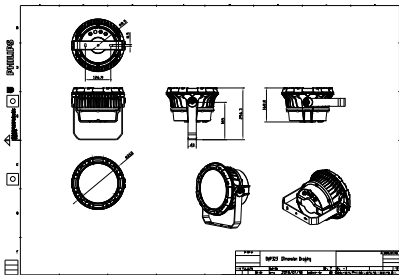
| | |
|---------------------------|---------------|
| Ambient temperature range | -40 to +50 °C |
|---------------------------|---------------|

Product Data

| | |
|-----------------------------------|-------------------------|
| Full product code | 911401740682 |
| Order product name | BVP323 36LED 40K 220V 8 |
| Order code | 911401740682 |
| SAP numerator – quantity per pack | 1 |
| Numerator – packs per outer box | 2 |
| Material no. (12 NC) | 911401740682 |
| SAP net weight (piece) | 5.199 kg |



Dimensional drawing



BVP321/322/323/324

