



# UniFlood C

## BVP323 36LED 40K 220V 15 DMX

UniFlood C is a circular-shaped, exterior-rated and cost-effective architectural LED floodlight that is designed for façade, landscape and outdoor flood lighting applications. The robust mechanical design and high-efficiency optical design make it ideal for illuminating multi-storey exterior facades, bridges, landmarks and monuments. Available in white, monochromatic colours, RGB, RGBW and tunable white. Six different spread lenses, ranging from narrow spot to wide flood, and a DMX512/RDM control option available to give architects and designers the freedom to explore a wide range of concepts and design with no limitations.

### Warnings and Safety

- For outdoor use only

### Product data

General Information		Operating and Electrical	
Lamp colour code	Neutral white	Flammability mark	F [ For mounting on normally flammable surfaces]
Light source replaceable	No	CE mark	CE mark
Number of gear units	1 unit	Constant light output	No
Driver/power unit/transformer	PSDMX [ Power supply unit with DMX interface]	Number of products on MCB (16 A type B)	4
Driver included	Yes	Light source engine type	LED
Optical cover/lens type	FG [ Flat glass]	Serviceability class	Class B, the luminaire is equipped with some serviceable parts (when applicable): driver, control units, surge-protection device, front cover and mechanical parts
Luminaire light beam spread	15°		
Control interface	Dynamic DMX/RDM		
Connection	Flying leads/wires and 2 push-in connectors 4-pole		
Cable	Cable 0.5 m without plug 3-pole and 2 cables 0.5 m with connector 4-pole	Input Voltage	220 to 240 V
Protection class IEC	Safety class I (I)	Input frequency	50 to 60 Hz
		Inrush current	60 A
		Inrush time	0.65 ms

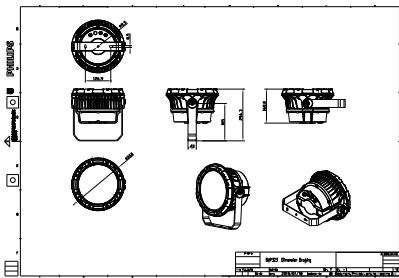
# UniFlood C

Power factor (min.)	0.9
<b>Controls and Dimming</b>	
Dimmable	Yes
<b>Mechanical and Housing</b>	
Housing material	Aluminum die-cast
Optic material	Polymethyl methacrylate
Optical cover/lens material	Tempered glass
Fixation material	Steel
Mounting device	MBA [ Mounting bracket adjustable]
Optical cover/lens shape	Flat
Optical cover/lens finish	Clear
Overall length	315 mm
Overall width	262 mm
Overall height	169 mm
Overall diameter	262 mm
Colour	Dark Grey
<b>Approval and Application</b>	
Ingress protection code	IP66 [ Dust penetration-protected, jet-proof]
Mech. impact protection code	IK08 [ 5 J vandal-protected]
<b>Initial Performance (IEC Compliant)</b>	
Initial luminous flux	5570 lm

Luminous flux tolerance	+/-10%
Initial LED luminaire efficacy	70 lm/W
Lamp colour temperature	4000 K
Colour Rendering Index	80
Initial chromaticity	SDCM = 4
Initial input power	80 W
Power consumption tolerance	+/-10%
<b>Application Conditions</b>	
Ambient temperature range	-40 to +50 °C
Maximum dimming level	1%
<b>Product Data</b>	
Full product code	911401740632
Order product name	BVP323 36LED 40K 220V 15 DMX
Order code	911401740632
SAP numerator – quantity per pack	1
Numerator – packs per outer box	2
SAP material	911401740632
SAP net weight (piece)	5.199 kg



## Dimensional drawing



BVP321/322/323/324

## UniFlood C

