



UniFlood C

BVP322 18LED 27K 220V 8 DMX

UniFlood C is a circular-shaped, exterior-rated and cost-effective architectural LED floodlight that is designed for façade, landscape and outdoor flood lighting applications. The robust mechanical design and high-efficiency optical design make it ideal for illuminating multi-storey exterior facades, bridges, landmarks and monuments. Available in white, monochromatic colours, RGB, RGBW and tunable white. Six different spread lenses, ranging from narrow spot to wide flood, and a DMX512/RDM control option available to give architects and designers the freedom to explore a wide range of concepts and design with no limitations.

Warnings and Safety

- For outdoor use only

Product data

General Information		Operating and Electrical	
Lamp colour code	Warm white	Flammability mark	F [For mounting on normally flammable surfaces]
Light source replaceable	No	CE mark	CE mark
Number of gear units	1 unit	Constant light output	No
Driver/power unit/transformer	PSDMX [Power supply unit with DMX interface]	Number of products on MCB (16 A type B)	6
Driver included	Yes	Light source engine type	LED
Optical cover/lens type	FG [Flat glass]	Serviceability class	Class B, the luminaire is equipped with some serviceable parts (when applicable): driver, control units, surge-protection device, front cover and mechanical parts
Luminaire light beam spread	8°		
Control interface	Dynamic DMX/RDM		
Connection	Flying leads/wires and 2 push-in connectors 4-pole		
Cable	Cable 0.5 m without plug 3-pole and 2 cables 0.5 m with connector 4-pole	Input Voltage	220 to 240 V
Protection class IEC	Safety class I (I)	Input frequency	50 to 60 Hz
		Inrush current	40 A
		Inrush time	0.45 ms

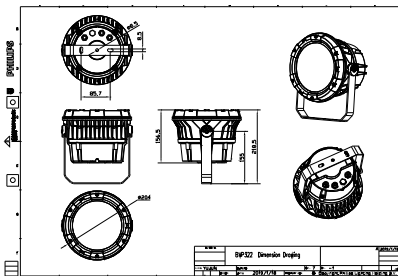
UniFlood C

Power factor (min.)	0.9
Controls and Dimming	
Dimmable	Yes
Mechanical and Housing	
Housing material	Aluminum die-cast
Optic material	Polymethyl methacrylate
Optical cover/lens material	Tempered glass
Fixation material	Steel
Mounting device	MBA [Mounting bracket adjustable]
Optical cover/lens shape	Flat
Optical cover/lens finish	Clear
Overall length	258 mm
Overall width	210 mm
Overall height	157 mm
Overall diameter	210 mm
Colour	Dark Grey
Approval and Application	
Ingress protection code	IP66 [Dust penetration-protected, jet-proof]
Mech. impact protection code	IK08 [5 J vandal-protected]
Initial Performance (IEC Compliant)	
Initial luminous flux	1740 lm

Luminous flux tolerance	+/-10%
Initial LED luminaire efficacy	48 lm/W
Lamp colour temperature	2700 K
Colour Rendering Index	80
Initial chromaticity	SDCM = 4
Initial input power	36 W
Power consumption tolerance	+/-10%
Application Conditions	
Ambient temperature range	-40 to +50 °C
Maximum dimming level	1%
Product Data	
Full product code	911401739892
Order product name	BVP322 18LED 27K 220V 8 DMX
Order code	911401739892
SAP numerator – quantity per pack	1
Numerator – packs per outer box	2
SAP material	911401739892
SAP net weight (piece)	4.099 kg



Dimensional drawing



BVP321/322/323/324

UniFlood C

