



MASTER LEDtube EM/ Mains

MASTER LEDtube 1200mm HO 14W840 T8 MY

The Philips MASTER LEDtube integrates a LED light source into a traditional fluorescent form factor. Its unique design creates a perfectly uniform visual appearance which cannot be distinguished from traditional fluorescent. This product is the ideal solution for up lighting in general lighting applications.

Warnings and Safety

• -

Product data

General information		Operating and electrical	
Cap base	G13 [Medium Bi-Pin Fluorescent]	Input frequency	50 to 60 Hz
EU RoHS compliant	Yes	Power (Rated) (Nom)	14 W
Nominal lifetime (nom.)	60000 h	Lamp current (nom.)	70 mA
Switching cycle	200,000X	Starting time (nom.)	0.5 s
Light technical		Warm-up time to 60% light (nom.)	0.5 s
Colour Code	840 [CCT of 4,000 K]	Power factor (nom.)	0.9
Technical Beam Angle (Nom)	190 °	Voltage (Nom)	220-240 V
Lamp Luminous Flux 25°C EL (Nom)	2100 lm	Temperature	
Colour Designation	Cool White (CW)	T-ambient (max.)	45 °C
Colour Temperature, horizontal (Nom)	4000 K	T-ambient (min.)	-20 °C
Lamp Luminous Efficacy EM (Nom)	150.00 lm/W	T storage (max.)	65 °C
Colour consistency	<6	T storage (min.)	-40 °C
Colour Rendering Index,horiz (Nom)	80	T-Case maximum (nom.)	50 °C
LLMF at end of nominal lifetime (nom.)	70 %		

MASTER LEDtube EM/Mains

Controls and dimming

Dimmable	No
----------	----

Mechanical and housing

Lamp Finish	Frosted
Bulb material	Plastic
Product length	1200 mm
Bulb shape	Tube, single-ended

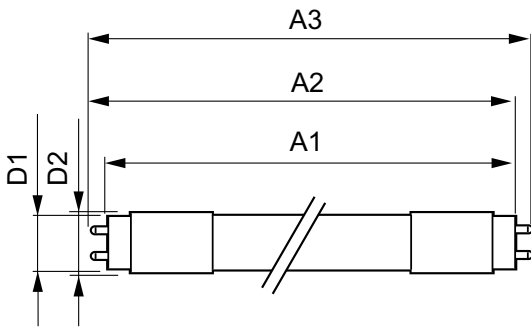
Approval and application

Energy-saving product	Yes
Approval marks	RoHS compliance KEMA Keur certificate

Product data

Full product code	871951446852800
Order product name	MASTER LEDtube 1200mm HO 14W840 T8 MY
EAN/UPC – product	8719514468528
Order code	929003556137
SAP numerator – quantity per pack	1
Numerator – packs per outer box	20
SAP material	929003556137
Net Weight (Piece)	0.180 kg

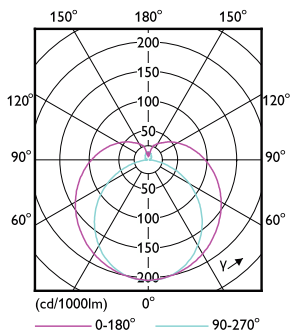
Dimensional drawing



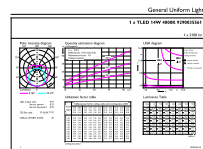
MASTER LEDtube 1200mm HO 14W840 T8 MY

Product	D1	D2	A1	A2	A3
MASTER LEDtube 1200mm HO 14W840 T8 MY	25.8 mm	28 mm	1198.2 mm	1205.3 mm	1212.4 mm

Photometric data



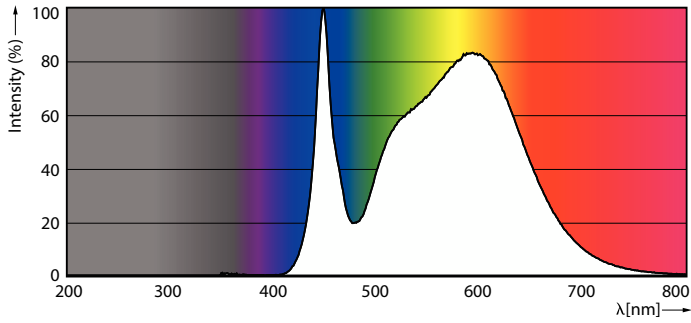
LEDtube MAS GMGC1 14W G13 2100lm 840-LDD



LEDtube MAS GMGC1 14W G13 2100lm 840

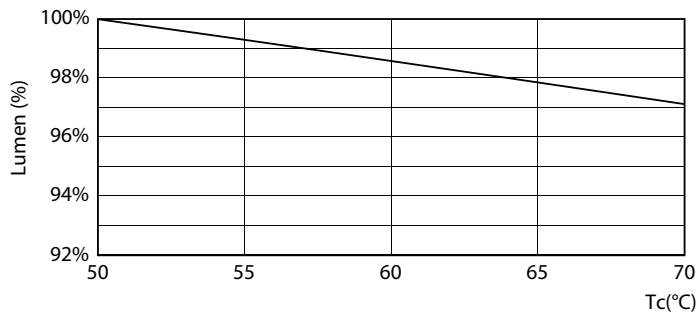
MASTER LEDtube EM/Mains

Photometric data

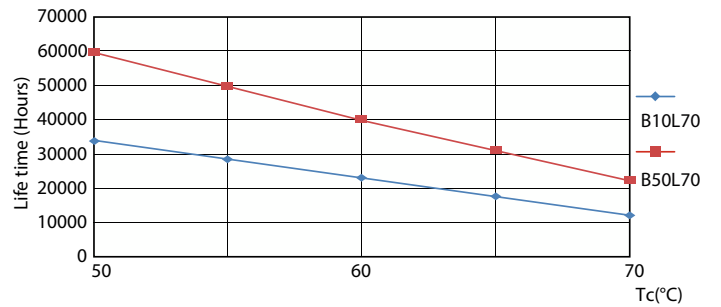


LEDtube MAS GMGC1 14W G13 2100lm 840-POC

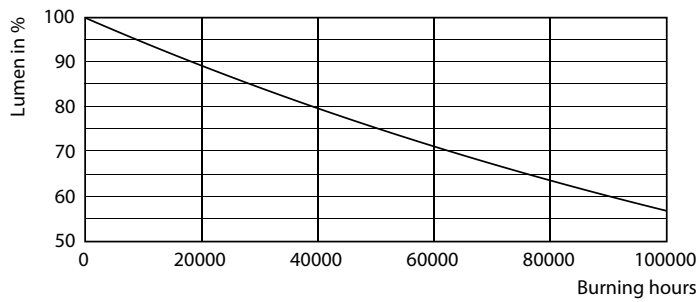
Lifetime



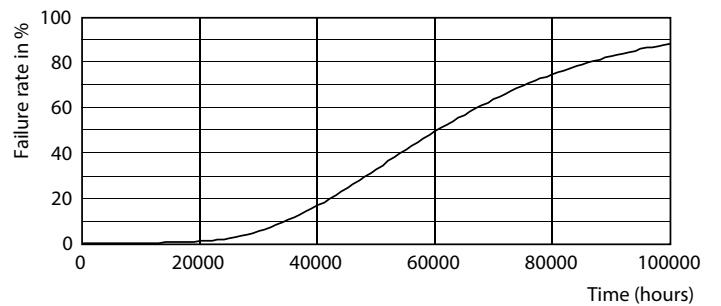
LEDtube MAS GMGC1 14W 60K LumenVsTc-LMP



LEDtube 60K 5070 LifetimeVsTc-LED



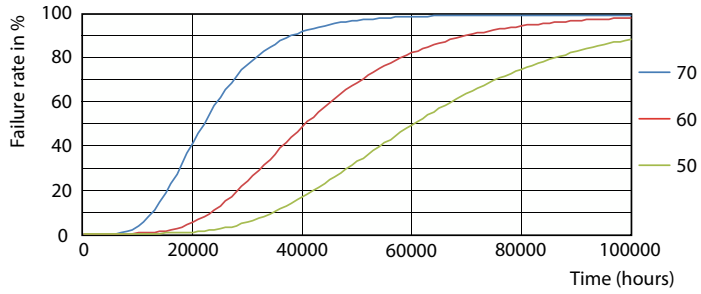
Lumen Maintenance Diagram



Life Expectancy Diagram

MASTER LEDtube EM/Mains

Lifetime



LEDtube 60K 5070 FailureRate-LED

