



MASTER LEDtube EM/ Mains

MASTER LEDtube STD 1200mm 10.5W865 T8

The Philips MASTER LEDtube integrates a LED light source into a traditional fluorescent form factor. Its unique design creates a perfectly uniform visual appearance which cannot be distinguished from traditional fluorescent. This product is the ideal solution for up lighting in general lighting applications.

Warnings and Safety

• -

Product data

General information		Operating and electrical	
Cap base	G13 [Medium Bi-Pin Fluorescent]	Input frequency	50 to 60 Hz
EU RoHS compliant	Yes	Power (Rated) (Nom)	10.5 W
Nominal lifetime (nom.)	60000 h	Lamp current (nom.)	53 mA
Switching cycle	200,000X	Starting time (nom.)	0.5 s
		Warm-up time to 60% light (nom.)	0.5 s
Light technical		Power factor (nom.)	0.9
Colour Code	865 [CCT of 6,500 K]	Voltage (Nom)	220-240 V
Technical Beam Angle (Nom)	190 °		
Lamp Luminous Flux 25°C EL (Nom)	1600 lm	Temperature	
Colour Designation	Cool Daylight	T-ambient (max.)	45 °C
Colour Temperature, horizontal (Nom)	6500 K	T-ambient (min.)	-20 °C
Lamp Luminous Efficacy EM (Nom)	152.00 lm/W	T storage (max.)	65 °C
Colour consistency	<6	T storage (min.)	-40 °C
Colour Rendering Index,horiz (Nom)	80	T-Case maximum (nom.)	50 °C
LLMF at end of nominal lifetime (nom.)	70 %		

MASTER LEDtube EM/Mains

Controls and dimming

Dimmable	No
----------	----

Mechanical and housing

Lamp Finish	Frosted
Bulb material	Plastic
Product length	1200 mm
Bulb shape	Tube, single-ended

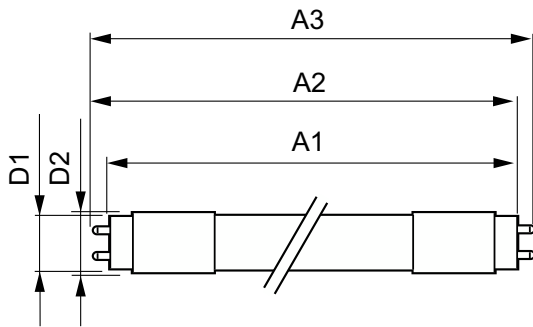
Approval and application

Energy-saving product	Yes
Approval marks	RoHS compliance KEMA Keur certificate

Product data

Full product code	871951446844300
Order product name	MASTER LEDtube STD 1200mm 10.5W865 T8
EAN/UPC – product	8719514468443
Order code	929003555908
SAP numerator – quantity per pack	1
Numerator – packs per outer box	20
SAP material	929003555908
Net Weight (Piece)	0.180 kg

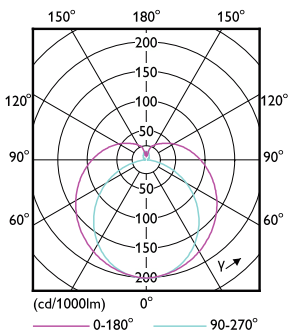
Dimensional drawing



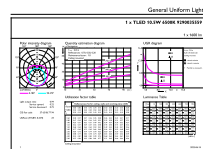
MASTER LEDtube STD 1200mm 10.5W865 T8

Product	D1	D2	A1	A2	A3
MASTER LEDtube STD 1200mm 10.5W865 T8	25.8 mm	28 mm	1198.2 mm	1205.3 mm	1212.4 mm

Photometric data



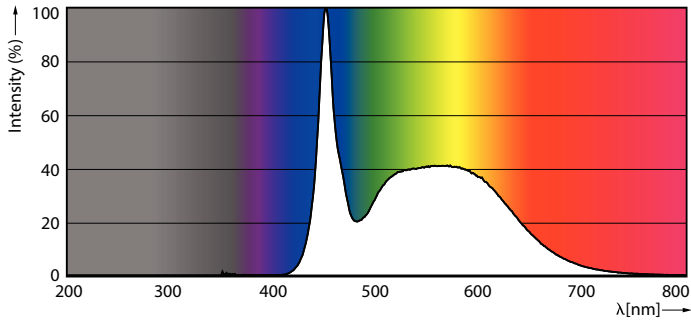
LEDtube MAS GMGC1 10,5W G13 1600lm 865-LDD



LEDtube MAS GMGC1 10,5W G13 1600lm 865

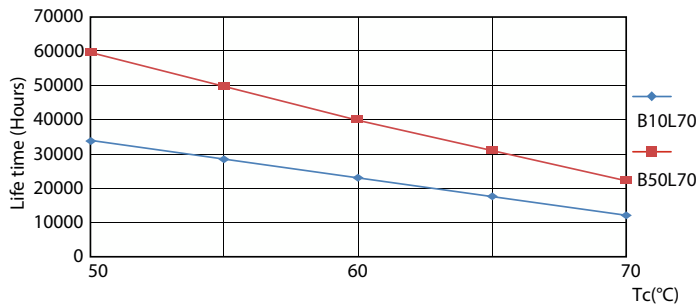
MASTER LEDtube EM/Mains

Photometric data

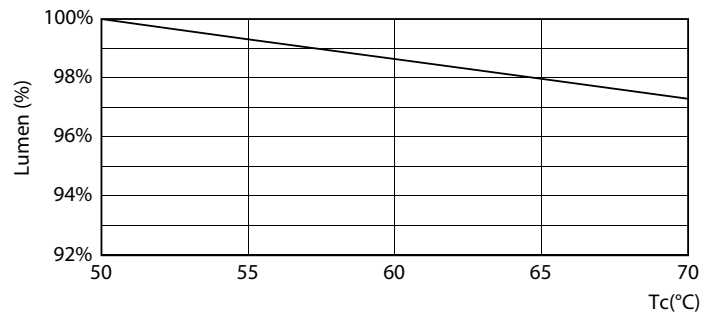


LEDtube MAS GMGC1 10,5W G13 1600lm 865-POC

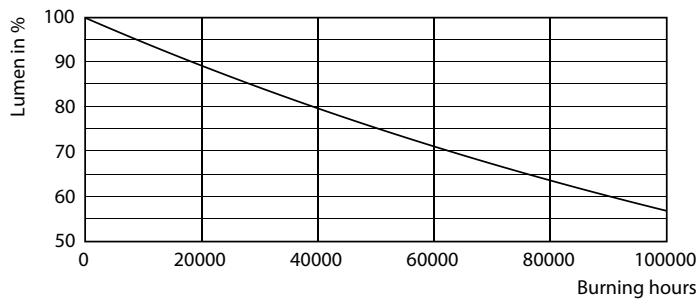
Lifetime



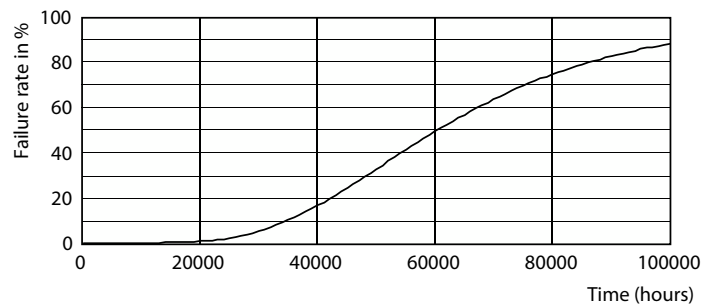
LEDtube 60K 5070 LifetimeVsTc-LED



LEDtube MAS GMGC1 10,5W 60K LumenVsTc-LMP



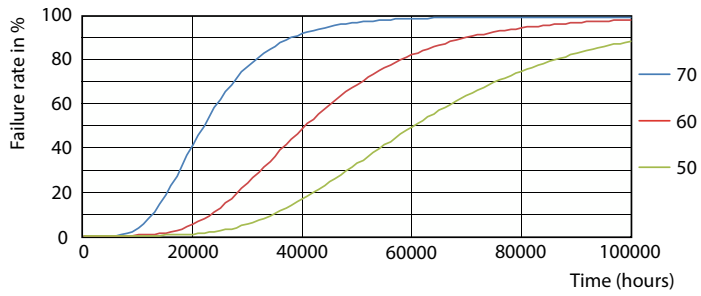
Lumen Maintenance Diagram



Life Expectancy Diagram

MASTER LEDtube EM/Mains

Lifetime



LEDtube 60K 5070 FailureRate-LED

