



# MASTER - LED HID SON-T

## TForce LED Road 35W E27 730 MV

Philips MASTER - LED HID SON-T lamps are an easy LED solution with a short payback period to replace High-Intensity Discharge (HID) and High-Pressure Sodium (SON) lamps. MASTER – LED HID SON-T solutions bring the energy efficiency and long lifetime benefits of LED to HID replacement, providing instant savings for a low initial investment. With the right lamp size and light distribution, you can easily retrofit MASTER – LED HID SON-T lamps into existing SON and SON-T systems, enhancing the lighting quality with LED without changing the luminaire’s ballast (for IF replacements) or reflector.

### Warnings and Safety

- Please refer to the installation guide or consult a Philips Lighting representative for the wiring diagram and instructions.

### Product data

General Information	
Cap-Base	E27 [E27]
Nominal lifetime	50,000 hour(s)
Switching Cycle	50,000
Lighting Technology	LED
Flux measurement reference	Sphere
EU RoHS compliant	Yes
Light Technical	
Color Code	730 [CCT of 3000K]
Luminous Flux	5,500 lumen
Color Designation	White (WH)
Correlated Color Temperature (Nom)	3000 K
Luminous Efficacy (rated) (Nom)	157.00 lm/W

Color Consistency	<6
Color rendering index (CRI)	70
LLMF At End Of Nominal Lifetime (Nom)	70 %
Operating and Electrical	
Line Frequency	50 to 60 Hz
Input Frequency	50 to 60 Hz
Power Consumption	35 W
Wattage Equivalent	70 W
Starting Time (Nom)	0.5 s
Warm-up time to 60% light	0.5 s
Power Factor (Fraction)	0.9
Voltage (Nom)	100-277 V

# MASTER - LED HID SON-T

## Temperature

T-Case Maximum (Nom)	95 °C
----------------------	-------

## Controls and Dimming

Dimmable	No
----------	----

## Mechanical and Housing

Bulb Finish	Clear
Bulb Shape	Others

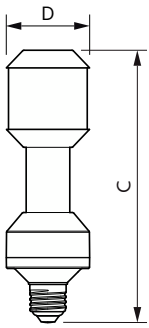
## Approval and Application

Energy Efficiency Class	D
Energy Consumption kWh/1000 h	35 kWh
EPREL Registration Number	406205

## Product Data

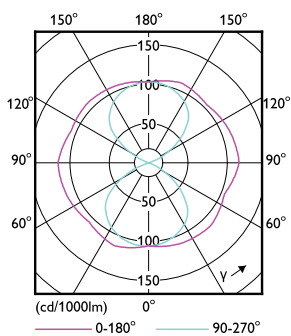
Full product code	871869967483000
Order product name	TForce LED Road 35W E27 730 MV
Order code	929002221708
Numerator - Quantity Per Pack	1
Numerator - Packs per outer box	6
Material Nr. (12NC)	929002221708
Full product name	TForce LED Road 35W E27 730 MV
EAN/UPC - Case	8718699674847
EAN/UPC - Product/Case	8718699674830

## Dimensional drawing

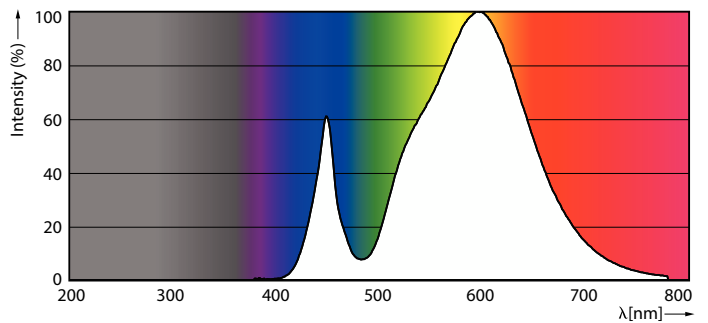


Product	D	C
TForce LED Road 35W E27 730 MV	61 mm	200 mm

## Photometric data



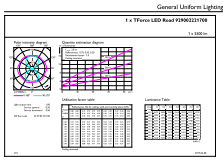
Light Distribution Diagram - TForce LED Road 35W E27 730 MV



Spectral Power Distribution Colour - TForce LED Road 35W E27 730 MV

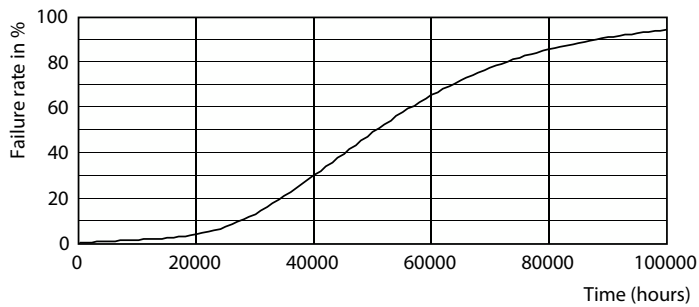
# MASTER - LED HID SON-T

## Photometric data

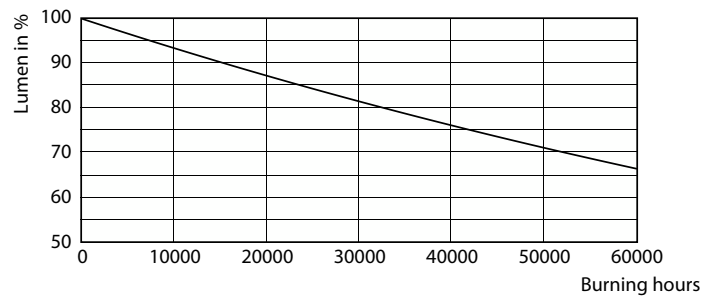


General uniform lighting - TForce LED Road 35W E27 730 MV

## Lifetime



Life Expectancy Diagram - TForce LED Road 35W E27 730 MV



Lumen Maintenance Diagram - TForce LED Road 35W E27 730 MV

