



# UniFlood C

## BVP324 72LED 27K 220V 30 DMX D2

8085 lm - 150 W - 2700 K

UniFlood C is a circular-shaped, exterior-rated and cost-effective architectural LED floodlight that is designed for façade, landscape and outdoor flood lighting applications. The robust mechanical design and high-efficiency optical design make it ideal for illuminating multi-storey exterior facades, bridges, landmarks and monuments. Available in white, monochromatic colours, RGB, RGBW and tunable white. Six different spread lenses, ranging from narrow spot to wide flood, and a DMX512/RDM control option available to give architects and designers the freedom to explore a wide range of concepts and design with no limitations.

### Warnings and Safety

- For outdoor use only

### Product data

| General Information      |  |
|--------------------------|--|
| Lamp colour code         | Warm white   |
| Driver included          | Yes  |
| Optical cover/lens type  | GT [ Tempered glass]   |
| Control interface        | Dynamic DMX/RDM  |
| Connection               | Flying leads/wires and 2 push-in connectors 4-pole                       |
| Cable                    | Cable 0.5 m without plug 3-pole and 2 cables 0.5 m with connector 4-pole |
| Protection class IEC     | Safety class I (I)   |
| Flammability mark        | F [ For mounting on normally flammable surfaces]                         |
| CE mark                  | CE mark  |
| Operating and Electrical |  |
| Input Voltage            | 220 to 240 V   |

| Input frequency             | 50 to 60 Hz             |
|-----------------------------|-------------------------|
| Inrush current              | 70 A                    |
| Power factor (min.)         | 0.9                     |
| Controls and Dimming        |                         |
| Dimmable                    | Yes                     |
| Mechanical and Housing      |                         |
| Housing material            | Aluminum die-cast       |
| Optical cover/lens material | Polymethyl methacrylate |
| Effective projected area    | 0.086 m <sup>2</sup>    |
| Colour                      | Dark Grey               |

# UniFlood C

## Approval and Application

|                              |   |
|------------------------------|---|
| Ingress protection code      | IP66 [ Dust penetration-protected, jet-proof] |
| Mech. impact protection code | IK08 [ 5 J vandal-protected]                  |

## Initial Performance (IEC Compliant)

|                                     |          |
|-------------------------------------|----------|
| Initial luminous flux (system flux) | 8085 lm  |
| Luminous flux tolerance             | +/-10%   |
| Initial LED luminaire efficacy      | 54 lm/W  |
| Lamp colour temperature             | 2700 K   |
| Colour Rendering Index              | 80       |
| Initial chromaticity                | SDCM = 4 |
| Initial input power                 | 150 W    |
| Power consumption tolerance         | +/-10%   |

## Application Conditions

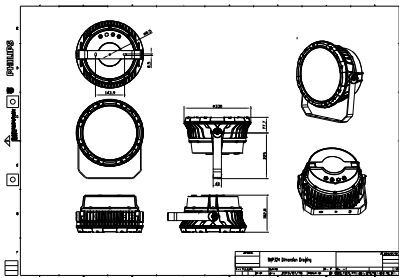
|                           |               |
|---------------------------|---------------|
| Ambient temperature range | -40 to +50 °C |
|---------------------------|---------------|

## Product Data

|                                   |                                 |
|-----------------------------------|---------------------------------|
| Full product code                 | 871951453993800                 |
| Order product name                | BVP324 72LED 27K 220V 30 DMX D2 |
| EAN/UPC – product                 | 8719514539938                   |
| Order code                        | 911401732263                    |
| SAP numerator – quantity per pack | 1                               |
| Numerator – packs per outer box   | 1                               |
| SAP material                      | 911401732263                    |
| SAP net weight (piece)            | 10.399 kg                       |



## Dimensional drawing



## Floodlight surface LED

