



UniFlood C

BVP324 72LED 27K 220V 30 D2

8250 lm - 150 W - 2700 K

UniFlood C is a circular-shaped, exterior-rated and cost-effective architectural LED floodlight that is designed for façade, landscape and outdoor flood lighting applications. The robust mechanical design and high-efficiency optical design make it ideal for illuminating multi-storey exterior facades, bridges, landmarks and monuments. Available in white, monochromatic colours, RGB, RGBW and tunable white. Six different spread lenses, ranging from narrow spot to wide flood, and a DMX512/RDM control option available to give architects and designers the freedom to explore a wide range of concepts and design with no limitations.

Warnings and Safety

- For outdoor use only

Product data

General Information		Inrush current	
Lamp colour code	Warm white	Inrush current	65 A
Driver included	Yes	Power factor (min.)	0.9
Optical cover/lens type	GT [Tempered glass]	Controls and Dimming	
Control interface	-	Dimmable	No
Connection	Flying leads/wires	Mechanical and Housing	
Cable	Cable 0.5 m without plug 3-pole	Housing material	Aluminum die-cast
Protection class IEC	Safety class I (I)	Optical cover/lens material	Polymethyl methacrylate
Flammability mark	F [For mounting on normally flammable surfaces]	Effective projected area	0.086 m ²
CE mark	CE mark	Colour	Dark Grey
Operating and Electrical		Approval and Application	
Input Voltage	220 to 240 V	Ingress protection code	IP66 [Dust penetration-protected, jet-proof]
Input frequency	50 to 60 Hz		

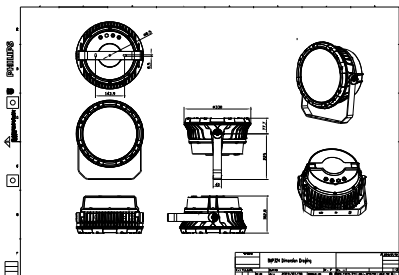
UniFlood C

Mech. impact protection code	IK08 [5 J vandal-protected]
Initial Performance (IEC Compliant)	
Initial luminous flux (system flux)	8250 lm
Luminous flux tolerance	+/-10%
Initial LED luminaire efficacy	55 lm/W
Lamp colour temperature	2700 K
Colour Rendering Index	80
Initial chromaticity	SDCM = 4
Initial input power	150 W
Power consumption tolerance	+/-10%
Application Conditions	
Ambient temperature range	-40 to +50 °C

Product Data	
Full product code	871951453992100
Order product name	BVP324 72LED 27K 220V 30 D2
EAN/UPC – product	8719514539921
Order code	911401732253
SAP numerator – quantity per pack	1
Numerator – packs per outer box	1
SAP material	911401732253
SAP net weight (piece)	10.399 kg



Dimensional drawing



Floodlight surface LED

