



# UniFlood C

## BVP324 54LED 27K 220V 15 D2

6950 lm - 110 W - 2700 K

UniFlood C is a circular-shaped, exterior-rated and cost-effective architectural LED floodlight that is designed for façade, landscape and outdoor flood lighting applications. The robust mechanical design and high-efficiency optical design make it ideal for illuminating multi-storey exterior facades, bridges, landmarks and monuments. Available in white, monochromatic colours, RGB, RGBW and tunable white. Six different spread lenses, ranging from narrow spot to wide flood, and a DMX512/RDM control option available to give architects and designers the freedom to explore a wide range of concepts and design with no limitations.

### Warnings and Safety

- For outdoor use only

### Product data

General Information		Inrush current		65 A
Lamp colour code	Warm white	Power factor (min.)	0.9	
Driver included	Yes	<b>Controls and Dimming</b>		
Optical cover/lens type	GT [ Tempered glass]	Dimmable	No	
Control interface	-	<b>Mechanical and Housing</b>		
Connection	Flying leads/wires	Housing material	Aluminum die-cast	
Cable	Cable 0.5 m without plug 3-pole	Optical cover/lens material	Polymethyl methacrylate	
Protection class IEC	Safety class I (I)	Effective projected area	0.086 m <sup>2</sup>	
Flammability mark	F [ For mounting on normally flammable surfaces]	Colour	Dark Grey	
CE mark	CE mark	<b>Approval and Application</b>		
<b>Operating and Electrical</b>		Ingress protection code	IP66 [ Dust penetration-protected, jet-proof]	
Input Voltage	220 to 240 V			
Input frequency	50 to 60 Hz			

# UniFlood C

Mech. impact protection code IK08 [ 5 J vandal-protected]

## Initial Performance (IEC Compliant)

Initial luminous flux (system flux)	6950 lm
Luminous flux tolerance	+/-10%
Initial LED luminaire efficacy	63 lm/W
Lamp colour temperature	2700 K
Colour Rendering Index	80
Initial chromaticity	SDCM = 4
Initial input power	110 W
Power consumption tolerance	+/-10%

## Application Conditions

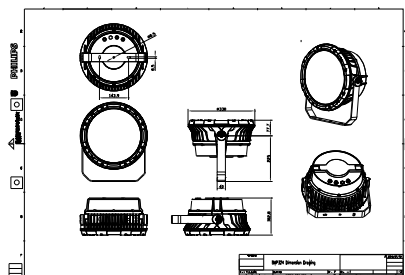
Ambient temperature range -40 to +50 °C

## Product Data

Full product code	871951453958700
Order product name	BVP324 54LED 27K 220V 15 D2
EAN/UPC – product	8719514539587
Order code	911401731913
SAP numerator – quantity per pack	1
Numerator – packs per outer box	1
SAP material	911401731913
SAP net weight (piece)	10.399 kg



## Dimensional drawing



## Floodlight surface LED

