

UniFlood C

BVP323 36LED 30K 220V 10 DMX D2

5770 lm - 80 W - 3000 K

UniFlood C is a circular-shaped, exterior-rated and cost-effective architectural LED floodlight that is designed for façade, landscape and outdoor flood lighting applications. The robust mechanical design and high-efficiency optical design make it ideal for illuminating multi-storey exterior facades, bridges, landmarks and monuments. Available in white, monochromatic colours, RGB, RGBW and tunable white. Six different spread lenses, ranging from narrow spot to wide flood, and a DMX512/RDM control option available to give architects and designers the freedom to explore a wide range of concepts and design with no limitations.

Warnings and Safety

- For outdoor use only

Product data

General information		Input frequency	
Lamp colour code	Warm white	Input frequency	50 to 60 Hz
Driver included	Yes	Inrush current	60 A
Optical cover/lens type	GT [Tempered glass]	Power factor (min.)	0.9
Control interface	Dynamic DMX/RDM	Controls and dimming	
Connection	Flying leads/wires and 2 push-in connectors 4-pole	Dimmable	Yes
Cable	Cable 0.5 m without plug 3-pole and 2 cables 0.5 m with connector 4-pole	Mechanical and housing	
Protection class IEC	Safety class I (I)	Housing material	Aluminum die-cast
Flammability mark	F [For mounting on normally flammable surfaces]	Optical cover/lens material	Polymethyl methacrylate
CE mark	CE mark	Effective projected area	0.055 m ²
Operating and electrical		Colour	Dark Grey
Input Voltage	220 to 240 V		

UniFlood C

Approval and application

Ingress protection code	IP66 [Dust penetration-protected, jet-proof]
Mech. impact protection code	IK08 [5 J vandal-protected]

Initial performance (IEC compliant)

Initial luminous flux (system flux)	5770 lm
Luminous flux tolerance	+/-10%
Initial LED luminaire efficacy	72 lm/W
Lamp colour temperature	3000 K
Colour Rendering Index	80
Initial chromaticity	SDCM = 4
Initial input power	80 W
Power consumption tolerance	+/-10%

Application conditions

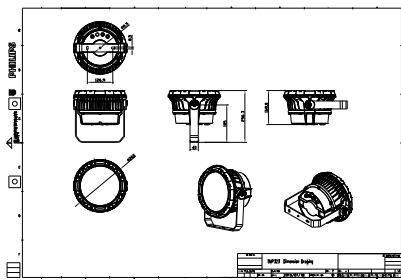
Ambient temperature range	-40 to +50 °C
---------------------------	---------------

Product data

Full product code	871951453933499
Order product name	BVP323 36LED 30K 220V 10 DMX D2
EAN/UPC – product	8719514539334
Order code	911401731663
SAP numerator – quantity per pack	1
Numerator – packs per outer box	2
SAP material	911401731663
Net Weight (Piece)	5.199 kg



Dimensional drawing



BVP323 36LED 30K 220V 10 DMX D2

