



UniFlood C

BVP323 24LED RGB 220V 30 DMX D2

2305 lm - 50 W - - K

UniFlood C is a circular-shaped, exterior-rated and cost-effective architectural LED floodlight that is designed for façade, landscape and outdoor flood lighting applications. The robust mechanical design and high-efficiency optical design make it ideal for illuminating multi-storey exterior facades, bridges, landmarks and monuments. Available in white, monochromatic colours, RGB, RGBW and tunable white. Six different spread lenses, ranging from narrow spot to wide flood, and a DMX512/RDM control option available to give architects and designers the freedom to explore a wide range of concepts and design with no limitations.

Warnings and Safety

- For outdoor use only

Product data

General Information	
Lamp colour code	Red, green and blue
Driver included	Yes
Optical cover/lens type	GT [Tempered glass]
Control interface	Dynamic DMX/RDM
Connection	Flying leads/wires and 2 push-in connectors 4-pole
Cable	Cable 0.5 m without plug 3-pole and 2 cables 0.5 m with connector 4-pole
Protection class IEC	Safety class I (I)
Flammability mark	F [For mounting on normally flammable surfaces]
CE mark	CE mark
Operating and Electrical	
Input Voltage	220 to 240 V

Input frequency	50 to 60 Hz
Inrush current	60 A
Power factor (min.)	0.9
Controls and Dimming	
Dimmable	Yes
Mechanical and Housing	
Housing material	Aluminum die-cast
Optical cover/lens material	Polymethyl methacrylate
Effective projected area	0.055 m ²
Colour	Dark Grey

UniFlood C

Approval and Application

Ingress protection code	IP66 [Dust penetration-protected, jet-proof]
Mech. impact protection code	IK08 [5 J vandal-protected]

Initial Performance (IEC Compliant)

Initial luminous flux (system flux)	2305 lm
Luminous flux tolerance	+/-10%
Initial LED luminaire efficacy	46 lm/W
Lamp colour temperature	- K
Colour Rendering Index	-
Initial input power	50 W
Power consumption tolerance	+/-10%

Application Conditions

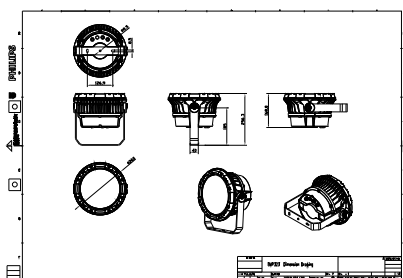
Ambient temperature range	-40 to +50 °C
---------------------------	---------------

Product Data

Full product code	871951453918199
Order product name	BVP323 24LED RGB 220V 30 DMX D2
EAN/UPC – product	8719514539181
Order code	911401731513
SAP numerator – quantity per pack	1
Numerator – packs per outer box	2
SAP material	911401731513
SAP net weight (piece)	5.199 kg



Dimensional drawing



Floodlight surface LED

