



UniFlood C

BVP323 24LED 40K 220V 15 D2

3990 lm - 50 W - 4000 K

UniFlood C is a circular-shaped, exterior-rated and cost-effective architectural LED floodlight that is designed for façade, landscape and outdoor flood lighting applications. The robust mechanical design and high-efficiency optical design make it ideal for illuminating multi-storey exterior facades, bridges, landmarks and monuments. Available in white, monochromatic colours, RGB, RGBW and tunable white. Six different spread lenses, ranging from narrow spot to wide flood, and a DMX512/RDM control option available to give architects and designers the freedom to explore a wide range of concepts and design with no limitations.

Warnings and Safety

- For outdoor use only

Product data

General Information		Controls and Dimming	
Lamp colour code	Neutral white	Inrush current	60 A
Driver included	Yes	Power factor (min.)	0.9
Optical cover/lens type	GT [Tempered glass]	Dimmable	No
Control interface	-	Housing material	Aluminum die-cast
Connection	Flying leads/wires	Optical cover/lens material	Polymethyl methacrylate
Cable	Cable 0.5 m without plug 3-pole	Effective projected area	0.055 m ²
Protection class IEC	Safety class I (I)	Colour	Dark Grey
Flammability mark	F [For mounting on normally flammable surfaces]		
CE mark	CE mark		
Operating and Electrical		Approval and Application	
Input Voltage	220 to 240 V	Ingress protection code	IP66 [Dust penetration-protected, jet-proof]
Input frequency	50 to 60 Hz		

UniFlood C

Mech. impact protection code	IK08 [5 J vandal-protected]
Initial Performance (IEC Compliant)	
Initial luminous flux (system flux)	3990 lm
Luminous flux tolerance	+/-10%
Initial LED luminaire efficacy	80 lm/W
Lamp colour temperature	4000 K
Colour Rendering Index	80
Initial chromaticity	SDCM = 4
Initial input power	50 W
Power consumption tolerance	+/-10%

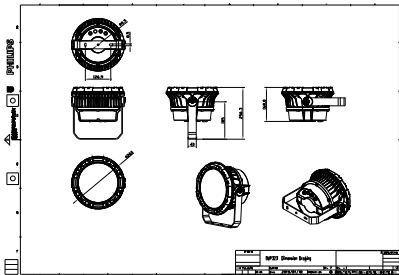
Application Conditions

Ambient temperature range	-40 to +50 °C
---------------------------	---------------

Product Data	
Full product code	871951453910599
Order product name	BVP323 24LED 40K 220V 15 D2
EAN/UPC – product	8719514539105
Order code	911401731433
SAP numerator – quantity per pack	1
Numerator – packs per outer box	2
SAP material	911401731433
SAP net weight (piece)	5.199 kg



Dimensional drawing



Floodlight surface LED

