



# UniFlood C

## BVP322 18LED RGB 220V 15 DMX D2

1440 lm - 36 W - - K

UniFlood C is a circular-shaped, exterior-rated and cost-effective architectural LED floodlight that is designed for façade, landscape and outdoor flood lighting applications. The robust mechanical design and high-efficiency optical design make it ideal for illuminating multi-storey exterior facades, bridges, landmarks and monuments. Available in white, monochromatic colours, RGB, RGBW and tunable white. Six different spread lenses, ranging from narrow spot to wide flood, and a DMX512/RDM control option available to give architects and designers the freedom to explore a wide range of concepts and design with no limitations.

### Warnings and Safety

- For outdoor use only

### Product data

General Information		Input frequency	
Lamp colour code	Red, green and blue	Input frequency	50 to 60 Hz
Driver included	Yes	Inrush current	40 A
Optical cover/lens type	GT [ Tempered glass]	Power factor (min.)	0.9
Control interface	Dynamic DMX/RDM	Controls and Dimming	
Connection	Flying leads/wires and 2 push-in connectors 4-pole	Dimmable	Yes
Cable	Cable 0.5 m without plug 3-pole and 2 cables 0.5 m with connector 4-pole	Mechanical and Housing	
Protection class IEC	Safety class I (I)	Housing material	Aluminum die-cast
Flammability mark	F [ For mounting on normally flammable surfaces]	Optical cover/lens material	Polymethyl methacrylate
CE mark	CE mark	Effective projected area	0.038 m <sup>2</sup>
		Colour	Dark Grey
Operating and Electrical			
Input Voltage	220 to 240 V		

# UniFlood C

## Approval and Application

Ingress protection code	IP66 [ Dust penetration-protected, jet-proof]
Mech. impact protection code	IK08 [ 5 J vandal-protected]

## Initial Performance (IEC Compliant)

Initial luminous flux (system flux)	1440 lm
Luminous flux tolerance	+/-10%
Initial LED luminaire efficacy	40 lm/W
Lamp colour temperature	- K
Colour Rendering Index	-
Initial input power	36 W
Power consumption tolerance	+/-10%

## Application Conditions

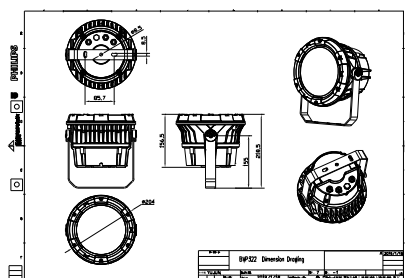
Ambient temperature range	-40 to +50 °C
---------------------------	---------------

## Product Data

Full product code	871951453885699
Order product name	BVP322 18LED RGB 220V 15 DMX D2
EAN/UPC – product	8719514538856
Order code	911401731183
SAP numerator – quantity per pack	1
Numerator – packs per outer box	2
SAP material	911401731183
SAP net weight (piece)	4.099 kg



## Dimensional drawing



## Floodlight surface LED

