



# UniFlood C

## BVP321 12LED 27K 220V 45 D2

1530 lm - 27 W - - K

UniFlood C is a circular-shaped, exterior-rated and cost-effective architectural LED floodlight that is designed for façade, landscape and outdoor flood lighting applications. The robust mechanical design and high-efficiency optical design make it ideal for illuminating multi-storey exterior facades, bridges, landmarks and monuments. Available in white, monochromatic colours, RGB, RGBW and tunable white. Six different spread lenses, ranging from narrow spot to wide flood, and a DMX512/RDM control option available to give architects and designers the freedom to explore a wide range of concepts and design with no limitations.

### Warnings and Safety

- For outdoor use only

### Product data

General Information	
Lamp colour code	Warm white
Driver included	Yes
Optical cover/lens type	GT [ Tempered glass]
Control interface	-
Connection	Flying leads/wires
Cable	Cable 0.5 m without plug 3-pole
Protection class IEC	Safety class I (I)
Flammability mark	F [ For mounting on normally flammable surfaces]
CE mark	CE mark
Operating and Electrical	
Input Voltage	220 to 240 V
Input frequency	50 to 60 Hz

Inrush current	60 A
Power factor (min.)	0.9
Controls and Dimming	
Dimmable	No
Mechanical and Housing	
Housing material	Aluminum die-cast
Optical cover/lens material	Polymethyl methacrylate
Effective projected area	0.03 m <sup>2</sup>
Colour	Dark Grey
Approval and Application	
Ingress protection code	IP66 [ Dust penetration-protected, jet-proof]

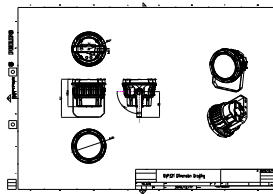
# UniFlood C

<b>Mech. impact protection code</b>	IK08 [ 5 J vandal-protected]
<b>Initial Performance (IEC Compliant)</b>	
<b>Initial luminous flux (system flux)</b>	1530 lm
<b>Luminous flux tolerance</b>	+/-10%
<b>Initial LED luminaire efficacy</b>	57 lm/W
<b>Lamp colour temperature</b>	- K
<b>Colour Rendering Index</b>	80
<b>Initial chromaticity</b>	4 SDCM
<b>Initial input power</b>	27 W
<b>Power consumption tolerance</b>	+/-10%
<b>Application Conditions</b>	
<b>Ambient temperature range</b>	-40 to +50 °C

<b>Product Data</b>	
<b>Full product code</b>	871951453842999
<b>Order product name</b>	BVP321 12LED 27K 220V 45 D2
<b>EAN/UPC – product</b>	8719514538429
<b>Order code</b>	911401730753
<b>SAP numerator – quantity per pack</b>	1
<b>Numerator – packs per outer box</b>	6
<b>SAP material</b>	911401730753
<b>SAP net weight (piece)</b>	2.366 kg



## Dimensional drawing



## Floodlight surface LED

