



UniFlood C

BVP321 12LED 40K 220V 10 D2

2130 lm - 27 W - -

The UniFlood C is a circular, exterior-rated and cost-effective architectural LED floodlight that is designed for façade, landscape and outdoor floodlighting use. The robust mechanical design and high-efficiency optical design make it ideal for illuminating multi-storey exterior facades, bridges, landmarks and monuments. Available in white, monochromatic colours, RGB, RGBW and tunable white. Six different spread lenses ranging from narrow spot to wide flood and a DMX512/RDM control option are available to give architects and designers the freedom to explore a wide range of concepts and designs with no limitations.

Warnings and Safety

- For outdoor use only

Product data

General information	
Lamp colour code	Neutral white
Driver included	Yes
Optical cover/lens type	GT [Tempered glass]
Control interface	-
Connection	Flying leads/wires
Cable	Cable 0.5 m without plug 3-pole
Protection class IEC	Safety class I (I)
Flammability mark	F [For mounting on normally flammable surfaces]
CE mark	CE mark

Operating and electrical	
Input Voltage	220 to 240 V
Input frequency	50 to 60 Hz

Inrush current	60 A
Power factor (min.)	0.9

Controls and dimming	
Dimmable	No

Mechanical and housing	
Housing material	Aluminum die-cast
Optical cover/lens material	Polymethyl methacrylate
Effective projected area	0.03 m ²
Colour	Dark Grey
Dimensions (height x width x depth)	NaN x NaN x NaN mm

UniFlood C

Approval and application

Ingress protection code	IP66 [Dust penetration-protected, jet-proof]
Mech. impact protection code	IK08 [5 J vandal-protected]

Initial performance (IEC compliant)

Initial luminous flux (system flux)	2130 lm
Luminous flux tolerance	+/-10%
Initial LED luminaire efficacy	79 lm/W
Lamp colour temperature	-
Colour Rendering Index	80
Initial chromaticity	4 SDCM
Initial input power	27 W
Power consumption tolerance	+/-10%

Application conditions

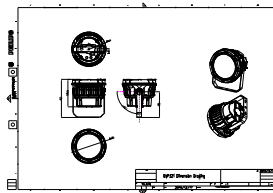
Ambient temperature range	-40 to +50 °C
---------------------------	---------------

Product data

Full product code	871951453819199
Order product name	BVP321 12LED 40K 220V 10 D2
EAN/UPC – product	8719514538191
Order code	911401730523
SAP numerator – quantity per pack	1
Numerator – packs per outer box	6
SAP material	911401730523
Net Weight (Piece)	2.366 kg



Dimensional drawing



BVP321 12LED 40K 220V 10 D2

