



# UniFlood C

## BVP321 9LED 30K 220V 60 DMX D2

1510 lm - 21 W - - K

UniFlood C is a circular-shaped, exterior-rated and cost-effective architectural LED floodlight that is designed for façade, landscape and outdoor flood lighting applications. The robust mechanical design and high-efficiency optical design make it ideal for illuminating multi-storey exterior facades, bridges, landmarks and monuments. Available in white, monochromatic colours, RGB, RGBW and tunable white. Six different spread lenses, ranging from narrow spot to wide flood, and a DMX512/RDM control option available to give architects and designers the freedom to explore a wide range of concepts and design with no limitations.

### Warnings and Safety

- For outdoor use only

### Product data

General information	
Lamp colour code	Warm white
Driver included	Yes
Optical cover/lens type	GT [ Tempered glass]
Control interface	Dynamic DMX/RDM
Connection	Flying leads/wires and 2 push-in connectors 4-pole
Cable	Cable 0.5 m without plug 3-pole and 2 cables 0.5 m with connector 4-pole
Protection class IEC	Safety class I (I)
Flammability mark	F [ For mounting on normally flammable surfaces]
CE mark	CE mark
Operating and electrical	
Input Voltage	220 to 240 V

Input frequency	50 to 60 Hz
Inrush current	60 A
Power factor (min.)	0.9
Controls and dimming	
Dimmable	Yes
Mechanical and housing	
Housing material	Aluminum die-cast
Optical cover/lens material	Polymethyl methacrylate
Effective projected area	0.03 m <sup>2</sup>
Colour	Dark Grey

# UniFlood C

## Approval and application

Ingress protection code	IP66 [ Dust penetration-protected, jet-proof]
Mech. impact protection code	IK08 [ 5 J vandal-protected]

## Initial performance (IEC compliant)

Initial luminous flux (system flux)	1510 lm
Luminous flux tolerance	+/-10%
Initial LED luminaire efficacy	72 lm/W
Lamp colour temperature	- K
Colour Rendering Index	80
Initial chromaticity	4 SDCM
Initial input power	21 W
Power consumption tolerance	+/-10%

## Application conditions

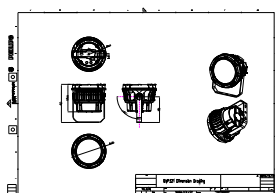
Ambient temperature range	-40 to +50 °C
---------------------------	---------------

## Product data

Full product code	871951453809299
Order product name	BVP321 9LED 30K 220V 60 DMX D2
EAN/UPC – product	8719514538092
Order code	911401730423
SAP numerator – quantity per pack	1
Numerator – packs per outer box	6
SAP material	911401730423
Net Weight (Piece)	2.366 kg



## Dimensional drawing



BVP321 9LED 30K 220V 60 DMX D2

