



# UniFlood C

## BVP321 9LED 27K 220V 60 DMX D2

1450 lm - 21 W - -

The UniFlood C is a circular, exterior-rated and cost-effective architectural LED floodlight that is designed for façade, landscape and outdoor floodlighting use. The robust mechanical design and high-efficiency optical design make it ideal for illuminating multi-storey exterior facades, bridges, landmarks and monuments. Available in white, monochromatic colours, RGB, RGBW and tunable white. Six different spread lenses ranging from narrow spot to wide flood and a DMX512/RDM control option are available to give architects and designers the freedom to explore a wide range of concepts and designs with no limitations.

### Warnings and Safety

- For outdoor use only

### Product data

General information		Operating and electrical	
Lamp colour code	Warm white	Input Voltage	220 to 240 V
Driver included	Yes	Input frequency	50 to 60 Hz
Optical cover/lens type	GT [ Tempered glass]	Inrush current	60 A
Control interface	Dynamic DMX/RDM	Power factor (min.)	0.9
Connection	Flying leads/wires and 2 push-in connectors 4-pole	<b>Controls and dimming</b>	
Cable	Cable 0.5 m without plug 3-pole and 2 cables 0.5 m with connector 4-pole	Dimmable	Yes
Protection class IEC	Safety class I (I)	<b>Mechanical and housing</b>	
Flammability mark	F [ For mounting on normally flammable surfaces]	Housing material	Aluminum die-cast
CE mark	CE mark	Optical cover/lens material	Polymethyl methacrylate
		Effective projected area	0.03 m <sup>2</sup>
		Colour	Dark Grey

# UniFlood C

Dimensions (height x width x depth) NaN x NaN x NaN mm

## Approval and application

Ingress protection code IP66 [ Dust penetration-protected, jet-proof]

Mech. impact protection code IK08 [ 5 J vandal-protected]

## Initial performance (IEC compliant)

Initial luminous flux (system flux) 1450 lm

Luminous flux tolerance +/-10%

Initial LED luminaire efficacy 69 lm/W

Lamp colour temperature -

Colour Rendering Index 80

Initial chromaticity 4 SDCM

Initial input power 21 W

Power consumption tolerance +/-10%

## Application conditions

Ambient temperature range -40 to +50 °C

## Product data

Full product code 871951453807899

Order product name BVP321 9LED 27K 220V 60 DMX D2

EAN/UPC – product 8719514538078

Order code 911401730403

SAP numerator – quantity per pack 1

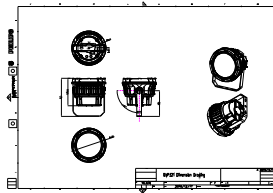
Numerator – packs per outer box 6

SAP material 911401730403

Net Weight (Piece) 2.366 kg



## Dimensional drawing



BVP321 9LED 27K 220V 60 DMX D2

