



UniFlood C

BVP321 8LED RGBWW 220V 30 DMX D2

1000 lm - 18 W - -

The UniFlood C is a circular, exterior-rated and cost-effective architectural LED floodlight that is designed for façade, landscape and outdoor floodlighting use. The robust mechanical design and high-efficiency optical design make it ideal for illuminating multi-storey exterior facades, bridges, landmarks and monuments. Available in white, monochromatic colours, RGB, RGBW and tunable white. Six different spread lenses ranging from narrow spot to wide flood and a DMX512/RDM control option are available to give architects and designers the freedom to explore a wide range of concepts and designs with no limitations.

Warnings and Safety

- For outdoor use only

Product data

General information		Operating and electrical	
Lamp colour code	Red, green, blue and white	Input Voltage	220 to 240 V
Driver included	Yes	Input frequency	50 to 60 Hz
Optical cover/lens type	GT [Tempered glass]	Inrush current	60 A
Control interface	Dynamic DMX/RDM	Power factor (min.)	0.9
Connection	Flying leads/wires and 2 push-in connectors 4-pole	Controls and dimming	
Cable	Cable 0.5 m without plug 3-pole and 2 cables 0.5 m with connector 4-pole	Dimmable	Yes
Protection class IEC	Safety class I (I)	Mechanical and housing	
Flammability mark	F [For mounting on normally flammable surfaces]	Housing material	Aluminum die-cast
CE mark	CE mark	Optical cover/lens material	Polymethyl methacrylate
		Effective projected area	0.03 m ²
		Colour	Dark Grey

UniFlood C

Dimensions (height x width x depth) NaN x NaN x NaN mm

Approval and application

Ingress protection code IP66 [Dust penetration-protected, jet-proof]

Mech. impact protection code IK08 [5 J vandal-protected]

Initial performance (IEC compliant)

Initial luminous flux (system flux) 1000 lm

Luminous flux tolerance +/-10%

Initial LED luminaire efficacy 56 lm/W

Lamp colour temperature -

Colour Rendering Index -

Initial chromaticity -

Initial input power 18 W

Power consumption tolerance +/-10%

Application conditions

Ambient temperature range -40 to +50 °C

Product data

Full product code 871951453795899

Order product name BVP321 8LED RGBWW 220V 30 DMX D2

EAN/UPC – product 8719514537958

Order code 911401730283

SAP numerator – quantity per pack 1

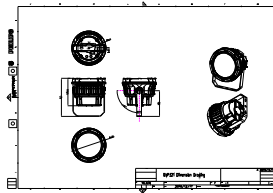
Numerator – packs per outer box 6

SAP material 911401730283

Net Weight (Piece) 2.366 kg



Dimensional drawing



BVP321 8LED RGBWW 220V 30 DMX D2

