



UniFlood C

BVP321 9LED 40K 220V 30 D2

1800 lm - 21 W K

UniFlood C is a circular-shaped, exterior-rated and cost-effective architectural LED floodlight that is designed for façade, landscape and outdoor flood lighting applications. The robust mechanical design and high-efficiency optical design make it ideal for illuminating multi-storey exterior facades, bridges, landmarks and monuments. Available in white, monochromatic colours, RGB, RGBW and tunable white. Six different spread lenses, ranging from narrow spot to wide flood, and a DMX512/RDM control option available to give architects and designers the freedom to explore a wide range of concepts and design with no limitations.

Warnings and Safety

- For outdoor use only

Product data

General Information		Inrush current		60 A
Lamp colour code	Neutral white	Power factor (min.)	0.9	
Driver included	Yes	Controls and Dimming		
Optical cover/lens type	GT [Tempered glass]	Dimmable	No	
Control interface	-	Mechanical and Housing		
Connection	Flying leads/wires	Housing material	Aluminum die-cast	
Cable	Cable 0.5 m without plug 3-pole	Optical cover/lens material	Polymethyl methacrylate	
Protection class IEC	Safety class I (I)	Effective projected area	0.03 m ²	
Flammability mark	F [For mounting on normally flammable surfaces]	Colour	Dark Grey	
CE mark	CE mark	Approval and Application		
Operating and Electrical		Ingress protection code	IP66 [Dust penetration-protected, jet-proof]	
Input Voltage	220 to 240 V			
Input frequency	50 to 60 Hz			

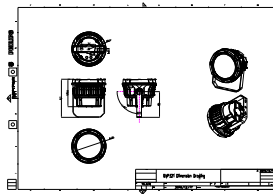
UniFlood C

Mech. impact protection code	IK08 [5 J vandal-protected]
Initial Performance (IEC Compliant)	
Initial luminous flux (system flux)	1800 lm
Luminous flux tolerance	+/-10%
Initial LED luminaire efficacy	86 lm/W
Lamp colour temperature	- K
Colour Rendering Index	80
Initial chromaticity	4 SDCM
Initial input power	21 W
Power consumption tolerance	+/-10%
Application Conditions	
Ambient temperature range	-40 to +50 °C

Product Data	
Full product code	871951453792799
Order product name	BVP321 9LED 40K 220V 30 D2
EAN/UPC – product	8719514537927
Order code	911401730253
SAP numerator – quantity per pack	1
Numerator – packs per outer box	6
SAP material	911401730253
SAP net weight (piece)	2.366 kg



Dimensional drawing



BVP321 9LED 40K 220V 30 D2

