



UniFlood C

BVP321 9LED 40K 220V 15 D2

1720 lm - 21 W - -

The UniFlood C is a circular, exterior-rated and cost-effective architectural LED floodlight that is designed for façade, landscape and outdoor floodlighting use. The robust mechanical design and high-efficiency optical design make it ideal for illuminating multi-storey exterior facades, bridges, landmarks and monuments. Available in white, monochromatic colours, RGB, RGBW and tunable white. Six different spread lenses ranging from narrow spot to wide flood and a DMX512/RDM control option are available to give architects and designers the freedom to explore a wide range of concepts and designs with no limitations.

Warnings and Safety

- For outdoor use only

Product data

| General information | |
|-------------------------|--|
| Lamp colour code | Neutral white |
| Driver included | Yes |
| Optical cover/lens type | GT [Tempered glass] |
| Control interface | - |
| Connection | Flying leads/wires |
| Cable | Cable 0.5 m without plug 3-pole |
| Protection class IEC | Safety class I (I) |
| Flammability mark | F [For mounting on normally flammable surfaces] |
| CE mark | CE mark |

| Operating and electrical | |
|--------------------------|--------------|
| Input Voltage | 220 to 240 V |
| Input frequency | 50 to 60 Hz |

| | |
|---------------------|------|
| Inrush current | 60 A |
| Power factor (min.) | 0.9 |

| Controls and dimming | |
|----------------------|----|
| Dimmable | No |

| Mechanical and housing | |
|-------------------------------------|-------------------------|
| Housing material | Aluminum die-cast |
| Optical cover/lens material | Polymethyl methacrylate |
| Effective projected area | 0.03 m ² |
| Colour | Dark Grey |
| Dimensions (height x width x depth) | NaN x NaN x NaN mm |

UniFlood C

Approval and application

| | |
|------------------------------|---|
| Ingress protection code | IP66 [Dust penetration-protected, jet-proof] |
| Mech. impact protection code | IK08 [5 J vandal-protected] |

Initial performance (IEC compliant)

| | |
|-------------------------------------|---------|
| Initial luminous flux (system flux) | 1720 lm |
| Luminous flux tolerance | +/-10% |
| Initial LED luminaire efficacy | 82 lm/W |
| Lamp colour temperature | - |
| Colour Rendering Index | 80 |
| Initial chromaticity | 4 SDCM |
| Initial input power | 21 W |
| Power consumption tolerance | +/-10% |

Application conditions

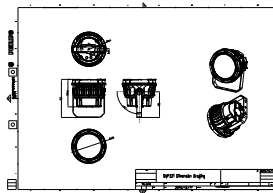
| | |
|---------------------------|---------------|
| Ambient temperature range | -40 to +50 °C |
|---------------------------|---------------|

Product data

| | |
|-----------------------------------|----------------------------|
| Full product code | 871951453783599 |
| Order product name | BVP321 9LED 40K 220V 15 D2 |
| EAN/UPC – product | 8719514537835 |
| Order code | 911401730163 |
| SAP numerator – quantity per pack | 1 |
| Numerator – packs per outer box | 6 |
| SAP material | 911401730163 |
| Net Weight (Piece) | 2.366 kg |



Dimensional drawing



BVP321 9LED 40K 220V 15 D2

