



# MASTER LEDtube EM/ Mains T8

## MAS LEDtube 1500mm HO 18.2W 840 T8

The Philips MASTER LEDtube integrates a LED light source into a traditional fluorescent form factor. Its unique design creates a perfectly uniform visual appearance which cannot be distinguished from traditional fluorescent. This product is the ideal solution for up lighting in general lighting applications.

### Warnings and Safety

• -

### Product data

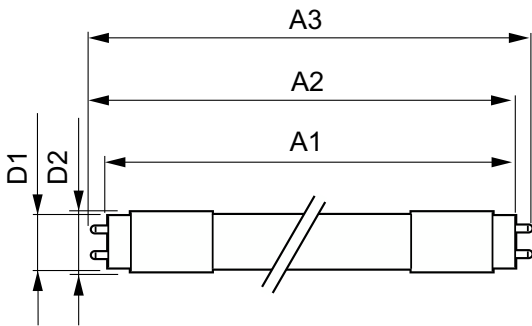
General Information		Color rendering index (CRI)	
Cap-Base	G13 ROT (Rotating) [Medium Bi-Pin Fluorescent]		80
Nominal lifetime	75,000 hour(s)	LLMF At End Of Nominal Lifetime (Nom)	70 %
Switching Cycle	200,000	Flickering value (PstLM)	0.5
Lighting Technology	LED	Stroboscopic effect value (SVM)	0.2
Flux measurement reference	Sphere	Photobiological safety according to EN 62471	RG0
CE mark	Yes	<b>Operating and Electrical</b>	
EU RoHS compliant	Yes	Line Frequency	50 to 60 Hz
<b>Light Technical</b>		Input Frequency	50 to 60 Hz
Color Code	840 [CCT of 4000K]	Power Consumption	18.2 W
Beam Angle (Nom)	160 degree(s)	Starting Time (Nom)	0.5 s
Luminous Flux	3,100 lumen	Warm-up time to 60% light	0.5 s
Color Designation	Cool White (CW)	Power Factor (Fraction)	0.9
Correlated Color Temperature (Nom)	4000 K	Voltage (Nom)	220-240 V
Luminous Efficacy (rated) (Nom)	170 lm/W	LED alternative to fluorescent lamp power	58 W
Color Consistency	<6	<b>Temperature</b>	
		Ambient temperature range	-20 °C to 45 °C

# MASTER LEDtube EM/Mains T8

T-Case Maximum (Nom)	55 °C
<b>Controls and Dimming</b>	
Dimmable	No
<b>Mechanical and Housing</b>	
Bulb Finish	Frosted
Bulb Material	Plastic
Product Length	1,500 mm
Bulb Shape	Tube, double-ended
<b>Approval and Application</b>	
Energy Efficiency Class	C
Energy Saving Product	Yes
Approval Marks	RoHS compliance TUV CE marking KEMA Keur certificate

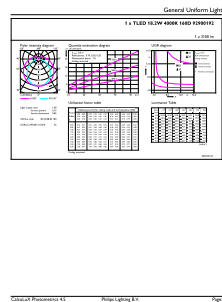
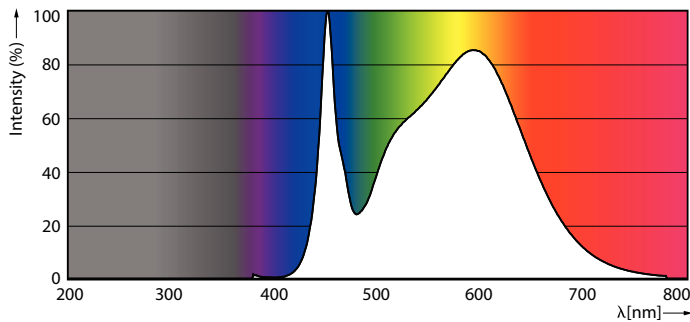
Energy Consumption kWh/1000 h	19 kWh
EPREL Registration Number	1206970
<b>Product Data</b>	
Full product code	871869959243100
Order product name	MAS LEDtube 1500mm HO 18.2W 840 T8
Order code	929001923002
Numerator - Quantity Per Pack	1
Numerator - Packs per outer box	10
Material Nr. (12NC)	929001923002
Full product name	MAS LEDtube 1500mm HO 18.2W 840 T8
EAN/UPC - Case	8718699592448
EAN/UPC - Product/Case	8718699592431

## Dimensional drawing



Product	D1	D2	A1	A2	A3
MAS LEDtube 1500mm HO 18.2W 840 T8	25.8 mm	28 mm	1,498.8 mm	1,505.9 mm	1,513 mm

## Photometric data

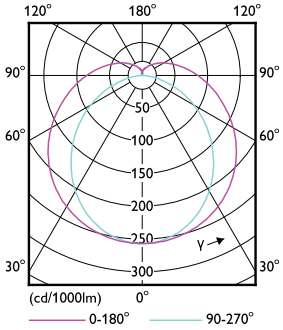


Spectral Power Distribution Colour - MAS LEDtube 1500mm HO 18.2W 840 T8

General uniform lighting - MAS LEDtube 1500mm HO 18.2W 840 T8

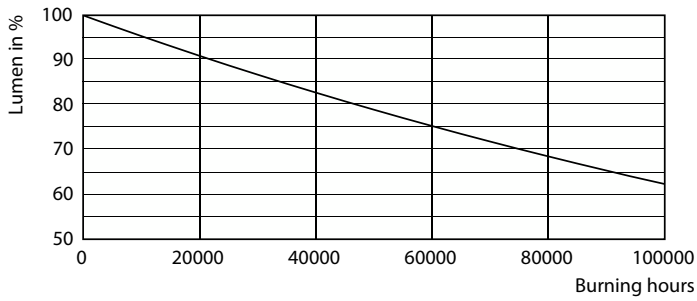
# MASTER LEDtube EM/Mains T8

## Photometric data

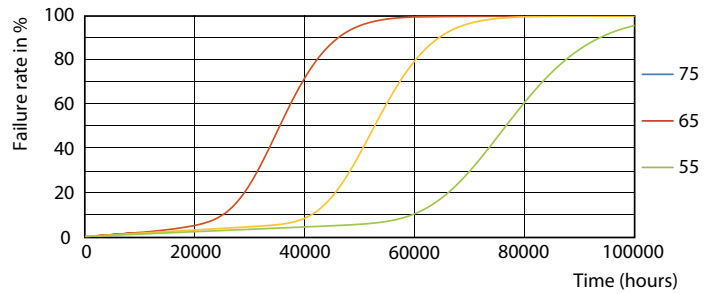


Light Distribution Diagram - MAS LEDtube 1500mm HO 18.2W 840 T8

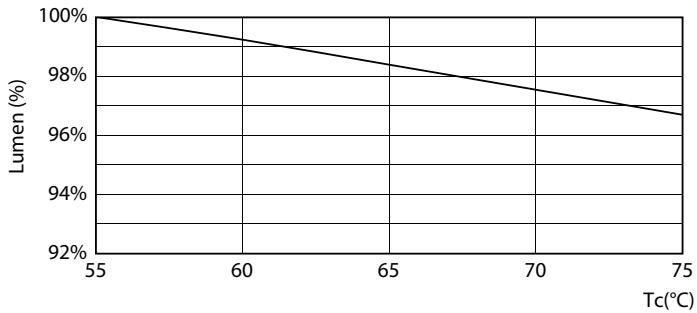
## Lifetime



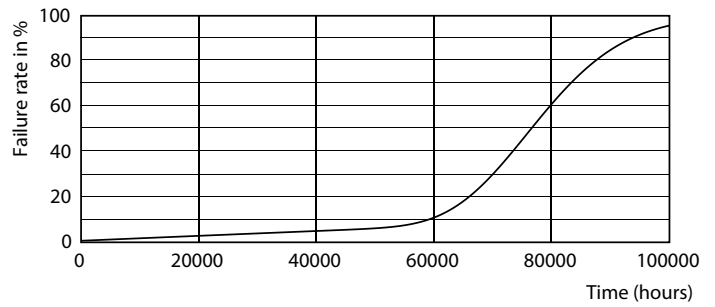
Lumen Maintenance Diagram - MAS LEDtube 1500mm HO 18.2W 840 T8



Life Expectancy Diagram - MAS LEDtube 1500mm HO 18.2W 840 T8



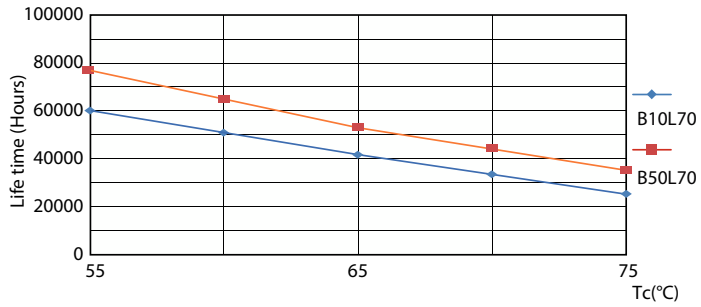
Lumen Maintenance Diagram - MAS LEDtube 1500mm HO 18.2W 840 T8



Life Expectancy Diagram - MAS LEDtube 1500mm HO 18.2W 840 T8

# MASTER LEDtube EM/Mains T8

## Lifetime



Life Expectancy Diagram - MAS LEDtube 1500mm HO 18.2W 840 T8

