



MASTER LEDtube EM/ Mains



MASTER LEDtube 1200mm HO 12.5W 865 T8

The Philips MASTER LEDtube integrates a LED light source into a traditional fluorescent form factor. Its unique design creates a perfectly uniform visual appearance which cannot be distinguished from traditional fluorescent. This product is the ideal solution for up lighting in general lighting applications.

Warnings and Safety

• -

Product data

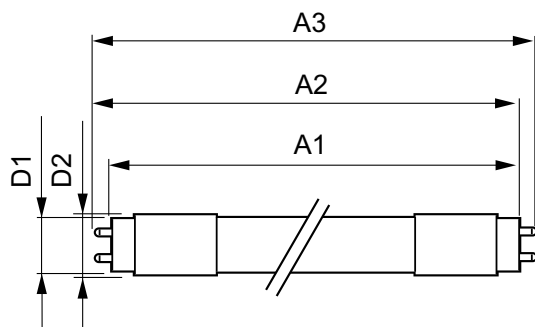
General Information		LLMF at end of nominal lifetime (nom.) 70 %	
Cap base	G13 ROT (Rotating) [Medium Bi-Pin Fluorescent]	Operating and Electrical	
EU RoHS compliant	Yes	Input frequency	50 to 60 Hz
Nominal lifetime (nom.)	70000 h	Power (Rated) (Nom)	12.5 W
Switching cycle	200,000X	Lamp current (max.)	63 mA
	Sphere	Lamp current (min.)	52 mA
Light Technical		Starting time (nom.)	0.5 s
Colour Code	865 [CCT of 6,500 K]	Warm-up time to 60% light (nom.)	0.5 s
Technical Beam Angle (Nom)	160 °	Power factor (nom.)	0.9
Lamp Luminous Flux 25°C EL (Nom)	2100 lm	Voltage (Nom)	220-240 V
Colour Designation	Cool Daylight	Temperature	
Colour Temperature, horizontal (Nom)	6500 K	T-ambient (max.)	45 °C
Lamp Luminous Efficacy EM (Nom)	168.00 lm/W	T-ambient (min.)	-20 °C
Colour consistency	<6	T storage (max.)	65 °C
Colour Rendering Index,horiz (Nom)	80	T storage (min.)	-40 °C

MASTER LEDtube EM/Mains

T-Case maximum (nom.)	50 °C
Controls and Dimming	
Dimmable	No
Mechanical and Housing	
Lamp Finish	Frosted
Bulb material	Plastic
Product length	1200 mm
Bulb shape	Tube, double-ended
Approval and Application	
Energy Efficiency Class	C
Energy-saving product	Yes
Approval marks	RoHS compliance CE marking KEMA Keur certificate

Energy consumption kWh/1,000 hours	13 kWh
	403592
Product Data	
Full product code	871869959239400
Order product name	MASTER LEDtube 1200mm HO 12.5W 865 T8
EAN/UPC – product	8718699592394
Order code	929001922802
SAP numerator – quantity per pack	1
Numerator – packs per outer box	10
SAP material	929001922802
SAP net weight (piece)	0.270 kg

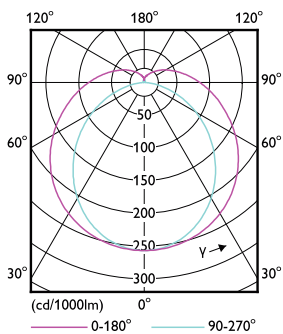
Dimensional drawing



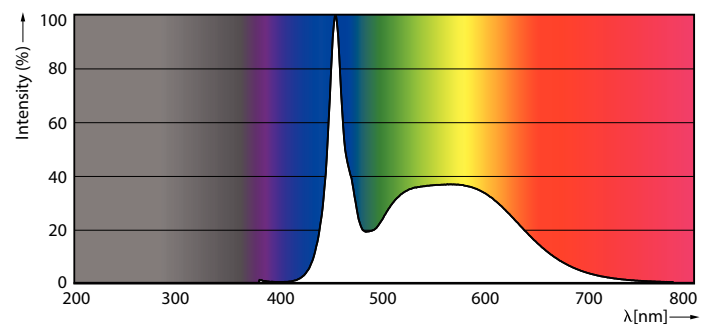
TLED master HE 2100lm 12.35w 4ft 6500k

Product	D1	D2	A1	A2	A3
MASTER LEDtube 1200mm HO 12.5W 865 T8	25.8 mm	28 mm	1198.2 mm	1205.3 mm	1212.4 mm

Photometric data



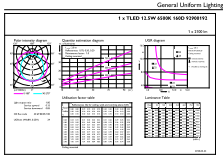
LEDtube MAS HO 12.5W G13 830 16D ND



LEDtube MAS SLR 12,5W G13 2100lm 865-POC-POC

MASTER LEDtube EM/Mains

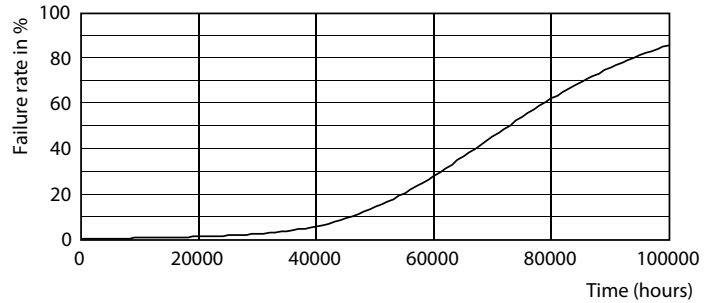
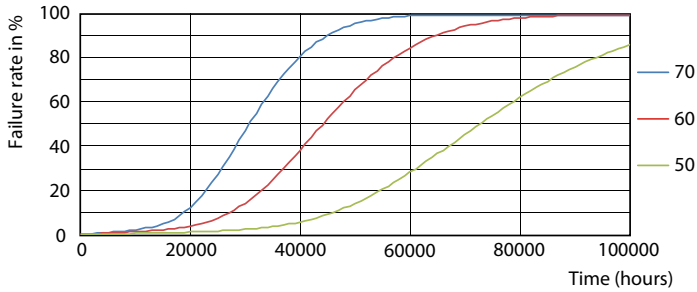
Photometric data



© 2021 Philips Lighting B.V. Page 11

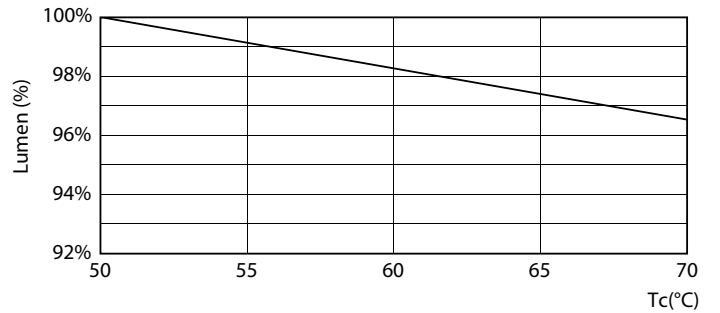
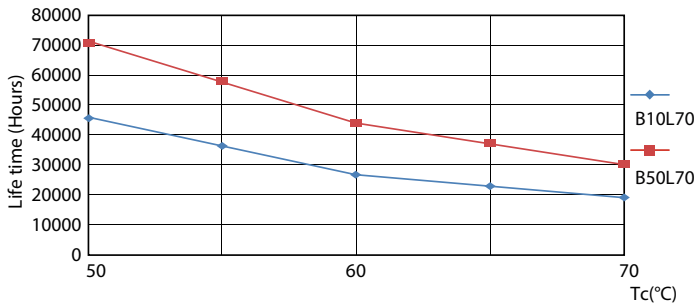
LEDtube MAS HO 12.5W G13 865 16D ND

Lifetime



LEDtube MAS SLR 12,5W 70K FailureRate-LED-LED

LEDtube_70K-LED

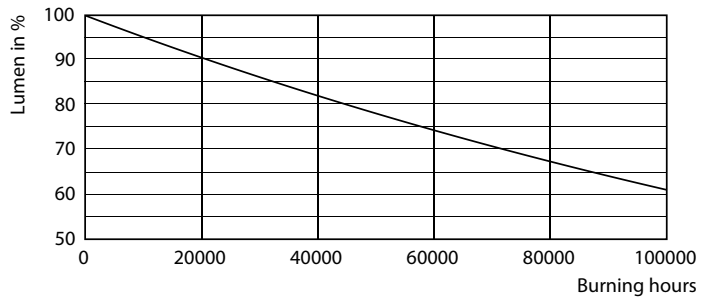


LEDtube MAS SLR 12,5W 70K LifetimeVsTc-LED-LED

LEDtube MAS SLR 12,5W 70K LumenVsTc-LMP-LMP

MASTER LEDtube EM/Mains

Lifetime



LEDtube_70K-LMP

