



# MASTER LEDtube EM/ Mains



## MASTER LEDtube 1200mm HO 12.5W 830 T8

The Philips MASTER LEDtube integrates a LED light source into a traditional fluorescent form factor. Its unique design creates a perfectly uniform visual appearance which cannot be distinguished from traditional fluorescent. This product is the ideal solution for up lighting in general lighting applications.

### Warnings and Safety

• -

### Product data

General Information	
Cap base	G13 ROT (Rotating) [ Medium Bi-Pin Fluorescent]
EU RoHS compliant	Yes
Nominal lifetime (nom.)	70000 h
Switching cycle	200,000X
	Sphere

Light Technical	
Colour Code	830 [ CCT of 3,000 K]
Technical Beam Angle (Nom)	160 °
Lamp Luminous Flux 25°C EL (Nom)	2000 lm
Colour Designation	White (WH)
Colour Temperature, horizontal (Nom)	3000 K
Lamp Luminous Efficacy EM (Nom)	160.00 lm/W
Colour consistency	<6
Colour Rendering Index,horiz (Nom)	80

LLMF at end of nominal lifetime (nom.) 70 %	
---	--

Operating and Electrical	
Input frequency	50 to 60 Hz
Power (Rated) (Nom)	12.5 W
Lamp current (max.)	63 mA
Lamp current (min.)	52 mA
Starting time (nom.)	0.5 s
Warm-up time to 60% light (nom.)	0.5 s
Power factor (nom.)	0.9
Voltage (Nom)	220-240 V

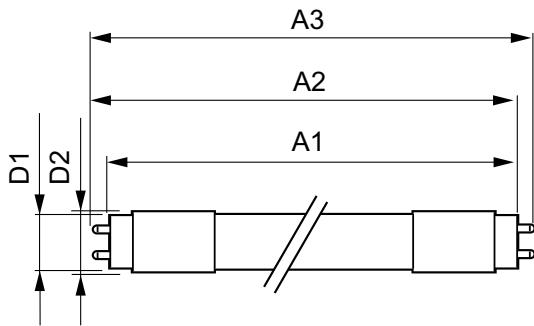
Temperature	
T-ambient (max.)	45 °C
T-ambient (min.)	-20 °C
T storage (max.)	65 °C
T storage (min.)	-40 °C

# MASTER LEDtube EM/Mains

T-Case maximum (nom.)	50 °C
<b>Controls and Dimming</b>	
Dimmable	No
<b>Mechanical and Housing</b>	
Lamp Finish	Frosted
Bulb material	Plastic
Product length	1200 mm
Bulb shape	Tube, double-ended
<b>Approval and Application</b>	
Energy Efficiency Class	C
Energy-saving product	Yes
Approval marks	RoHS compliance CE marking KEMA Keur certificate

Energy consumption kWh/1,000 hours	13 kWh
	403590
<b>Product Data</b>	
Full product code	871869959235600
Order product name	MASTER LEDtube 1200mm HO 12.5W 830 T8
EAN/UPC – product	8718699592356
Order code	929001922602
SAP numerator – quantity per pack	1
Numerator – packs per outer box	10
SAP material	929001922602
SAP net weight (piece)	0.270 kg

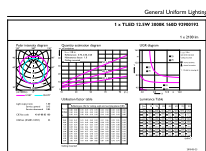
## Dimensional drawing



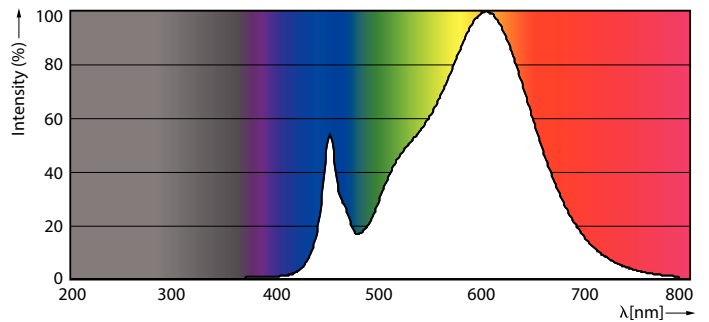
TLED master HE 2000lm12.35w 4ft 3000k

Product	D1	D2	A1	A2	A3
MASTER LEDtube 1200mm HO 12.5W 830 T8	25.8 mm	28 mm	1198.2 mm	1205.3 mm	1212.4 mm

## Photometric data



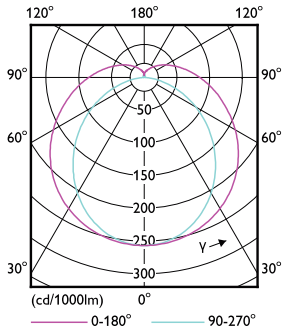
LEDtube MAS HO 12.5W G13 830 16D ND



LEDtube MAS HO 12.5W G13 830 16D ND

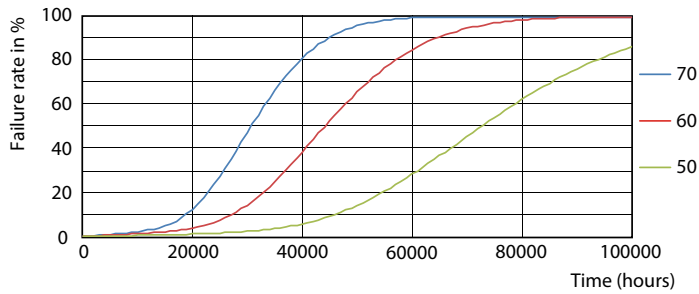
# MASTER LEDtube EM/Mains

## Photometric data

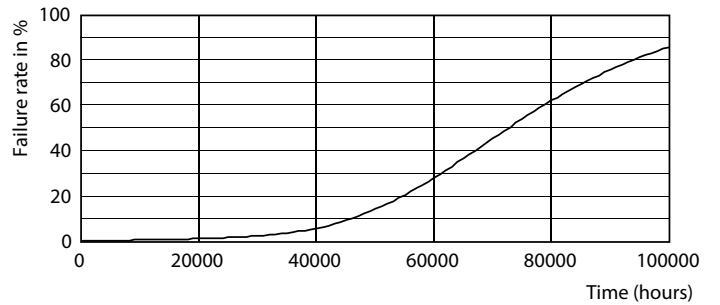


LEDtube MAS HO 12.5W G13 830 16D ND

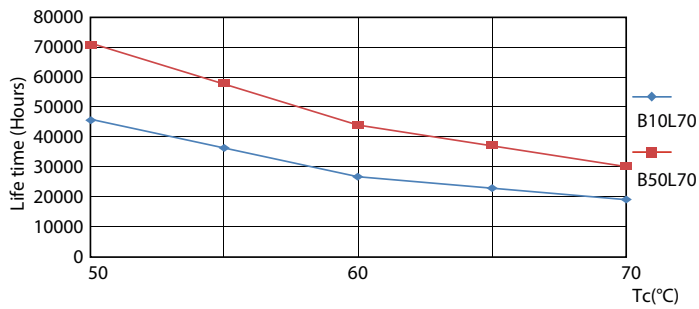
## Lifetime



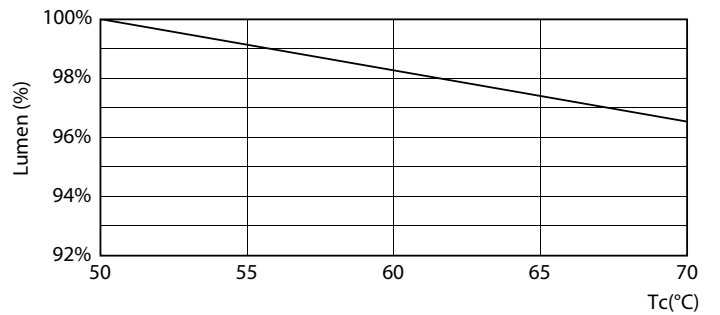
LEDtube MAS SLR 12,5W 70K FailureRate-LED-LED



LEDtube\_70K-LED



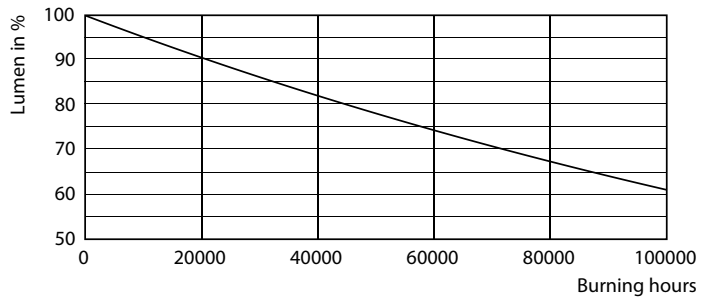
LEDtube MAS SLR 12,5W 70K LifetimeVsTc-LED-LED



LEDtube MAS SLR 12,5W 70K LumenVsTc-LMP-LMP

# MASTER LEDtube EM/Mains

## Lifetime



LEDtube\_70K-LMP

