



# MASTER LEDtube EM/ Mains T8

## MAS LEDtube STD 1200mm 10.5W865 T8 I

The Philips MASTER LEDtube integrates a LED light source into a traditional fluorescent form factor. Its unique design creates a perfectly uniform visual appearance which cannot be distinguished from traditional fluorescent. This product is the ideal solution for up lighting in general lighting applications.

### Warnings and Safety

• -

### Product data

General Information		Operating and Electrical	
Lighting Technology	LED	Line Frequency	50 to 60 Hz
Switching Cycle	200,000	Input Frequency	50 to 60 Hz
Nominal lifetime	50,000 hour(s)	Power Consumption	10.5 W
Cap-Base	G13 [Medium Bi-Pin Fluorescent]	Starting Time (Nom)	0.5 s
		Warm-up time to 60% light	0.5 s
		Power Factor (Fraction)	0.9
		Voltage (Nom)	220-240 V
Light Technical		Temperature	
Color Code	865 [CCT of 6500K]	Ambient temperature range	-20 °C to 45 °C
Beam Angle (Nom)	160 degree(s)	T-Case Maximum (Nom)	35 °C
Luminous Flux	1,600 lumen		
Color Designation	Cool Daylight	Controls and Dimming	
Correlated Color Temperature (Nom)	6500 K	Dimmable	No
Luminous Efficacy (rated) (Nom)	152.00 lm/W		
Color Consistency	<6	Mechanical and Housing	
Color rendering index (CRI)	83	Bulb Finish	Frosted
LLMF At End Of Nominal Lifetime (Nom)	70 %		

# MASTER LEDtube EM/Mains T8

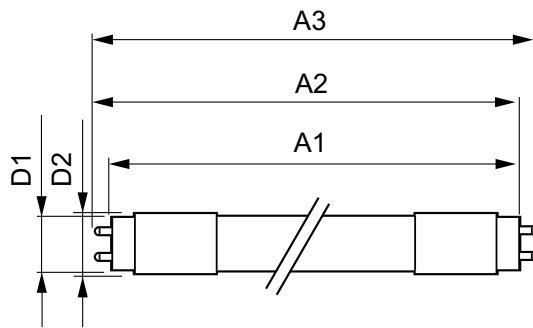
Bulb Material	Plastic
Product Length	1,200 mm
Bulb Shape	Tube, double-ended
<b>Approval and Application</b>	
Energy Saving Product	Yes
Approval Marks	RoHS compliance
Energy Consumption kWh/1000 h	11 kWh
EU RoHS compliant	Yes

## Product Data

Full product code	871869668770300
-------------------	-----------------

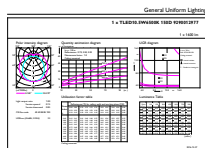
Order product name	MAS LEDtube STD 1200mm 10.5W865 T8 I
Order code	929001297708
Numerator - Quantity Per Pack	1
Numerator - Packs per outer box	10
Material number (12NC)	929001297708
Full product name	MAS LEDtube STD 1200mm 10.5W865 T8 I
EAN/UPC - Case	8718696687710

## Dimensional drawing



Product	D1	D2	A1	A2	A3
MAS LEDtube STD 1200mm 10.5W865 T8 I	25.8 mm	28 mm	1,198.2 mm	1,205.3 mm	1,212.4 mm

## Photometric data



## General uniform lighting - MAS LEDtube STD 1200mm 10.5W865 T8 I

## MASTER LEDtube EM/Mains T8

