



# UniStrip G4

## BCP385 12LED RGBNW 220V A7 L100 DMX

UniStrip G4 - 3047 lm - 100 W - - K

UniStrip G4 is a surface-mounted, exterior-rated LED luminaire that is designed for façade and outdoor architectural lighting applications.;One family that fits all your needs, wall washing, grazing and also linear flood lighting.;The robust mechanical and unique optical designs make it ideal for illuminating buildings facades, bridges, overpasses and any application that requires a linear lighting solution.;Available in white, monochromatic colours, RGB, RGBW and tunable white and DMX control option available with up to 8 pixels (8IDs) to give architects and designers the freedom to explore a wide range of concepts and design with no limitations.

### Warnings and Safety

- For outdoor use only

### Product data

General Information	
Lamp colour code	Red, green, blue and white
Light source replaceable	No
Number of gear units	1 unit
Driver/power unit/transformer	PSU [ Power supply unit]
Driver included	Yes
Optical cover/lens type	CLFT [ Clear flat]
Luminaire light beam spread	15° x 40°
Control interface	Dynamic DMX
Connection	Flying leads/wires and 2 push-in connectors 4-pole
Cable	Cable 0.3 m without plug 3-pole + 2 cables 0.3 m with connector 4-pole
Protection class IEC	Safety class I (I)

Flammability mark	F [ For mounting on normally flammable surfaces]
CE mark	CE mark
Optic type outdoor	Asymmetrical
Number of products on MCB (16 A type B)	3
Light source engine type	LED
Serviceability class	Class B, the luminaire is equipped with some serviceable parts (when applicable): driver, control units, surge-protection device, front cover and mechanical parts

Light Technical	
Standard tilt angle post-top	-

# UniStrip G4

Standard tilt angle side entry	-
--------------------------------	---

## Operating and Electrical

Input Voltage	220 to 240 V
Input frequency	50 to 60 Hz
Inrush current	70 A
Inrush time	0.65 ms
Power factor (min.)	0.9

## Controls and Dimming

Dimmable	Yes
----------	-----

## Mechanical and Housing

Housing material	Aluminum extruded
Optic material	Polymethyl methacrylate
Optical cover/lens material	Tempered glass
Fixation material	Aluminium
Mounting device	MBA [ Mounting bracket adjustable]
Optical cover/lens shape	Flat
Optical cover/lens finish	Clear
Overall length	1000 mm
Overall width	88 mm
Overall height	158 mm
Colour	Dark Grey

## Approval and Application

Ingress protection code	IP66 [ Dust penetration-protected, jet-proof]
-------------------------	---

Mech. impact protection code	IK06 [ 1 J]
------------------------------	-------------

## Initial Performance (IEC Compliant)

Initial luminous flux (system flux)	3047 lm
Luminous flux tolerance	+/-10%
Initial LED luminaire efficacy	30 lm/W
Lamp colour temperature	- K
Colour Rendering Index	-
Initial input power	100 W
Power consumption tolerance	+/-10%

## Application Conditions

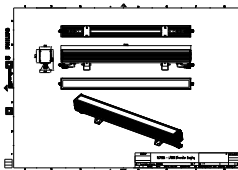
Ambient temperature range	-40 to +50 °C
Maximum dimming level	10%

## Product Data

Full product code	911401752192
Order product name	BCP385 12LED RGBNW 220V A7 L100 DMX
Order code	911401752192
SAP numerator – quantity per pack	1
Numerator – packs per outer box	2
SAP material	911401752192
SAP net weight (piece)	3.949 kg



## Dimensional drawing



BCP280/383/384/385 UNiStrip G3

## UniStrip G4

