

# UniStrip G4

**BCP380 48LEDLP RGBNW 24V 40 L100 4PX**

UniStrip G4 - 517 lm - 11.5 W - - K

UniStrip G4 is a surface-mounted, exterior-rated LED luminaire that is designed for façade and outdoor architectural lighting applications.;One family that fits all your needs, wall washing, grazing and also linear flood lighting.;The robust mechanical and unique optical designs make it ideal for illuminating buildings facades, bridges, overpasses and any application that requires a linear lighting solution.;Available in white, monochromatic colours, RGB, RGBW and tunable white and DMX control option available with up to 8 pixels (8IDs) to give architects and designers the freedom to explore a wide range of concepts and design with no limitations.

## Warnings and Safety

- For outdoor use only

## Product data

General Information		Serviceability class	
Lamp colour code	Red, green, blue and white	Class B, the luminaire is equipped with some serviceable parts (when applicable): driver, control units, surge-protection device, front cover and mechanical parts	
Light source replaceable	No	Operating and Electrical	
Driver included	No	Input Voltage	24 DC V
Optical cover/lens type	CLFT [ Clear flat]	Input frequency	- Hz
Luminaire light beam spread	40° x 40°	Power factor (min.)	0.9
Control interface	Dynamic DMX	Controls and Dimming	
Connection	2 push-in connectors 5-pole	Dimmable	Yes
Cable	2 cables 0.15 m with connectors 5-pole		
Protection class IEC	Safety class III (III)		
Flammability mark	F [ For mounting on normally flammable surfaces]		
CE mark	CE mark		
Light source engine type	LED		

# UniStrip G4

## Mechanical and Housing

Housing material	Aluminum extruded
Optic material	Polycarbonate
Optical cover/lens material	Tempered glass
Fixation material	Stainless steel
Mounting device	MBA [ Mounting bracket adjustable]
Optical cover/lens finish	Clear
Overall length	1000 mm
Overall width	35 mm
Overall height	86 mm
Colour	Dark Grey

## Approval and Application

Ingress protection code	IP66 [ Dust penetration-protected, jet-proof]
Mech. impact protection code	IK06 [ 1 J]

## Initial Performance (IEC Compliant)

Initial luminous flux (system flux)	517 lm
Luminous flux tolerance	+/-10%
Initial LED luminaire efficacy	45 lm/W

Lamp colour temperature	- K
Colour Rendering Index	-
Initial input power	11.5 W
Power consumption tolerance	+/-10%

## Application Conditions

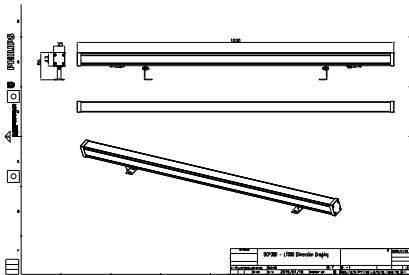
Ambient temperature range	-40 to +50 °C
---------------------------	---------------

## Product Data

Full product code	911401738592
Order product name	BCP380 48LEDLP RGBNW 24V 40 L100 4PX
Order code	911401738592
SAP numerator – quantity per pack	1
Numerator – packs per outer box	15
SAP material	911401738592
SAP net weight (piece)	1.199 kg



## Dimensional drawing



BCP280/383/384/385 UNiStrip G3

