



Make roads safer and sustainable.

GreenVision Xceed Gen2

Sustainability, citizen well being and connectivity are key players in the game of differentiation among cities all over the world. And a way of achieving this goals is lighting. Lighting up streets and roads enhance the comfort, security and overall safety of our rapidly growing urban environments. Our GreenVision Xceed Gen2 makes an affordable LED road lighting solution that ensures sufficient light on your roads & streets. The GreenVision Xceed Gen2 family from Signify provides your city with a flexible lighting system which can be deployed anywhere in urban spaces, highways and rural areas – our luminaires provide the optimal light for all application areas. And, GreenVision Xceed Gen2 is ready to be connected and work with smart city ecosystem. Our new GreenVision Xceed Gen2 range is enhanced to give city lighting departments even more control – to choose the right light

Benefits

- Robust & Reliable with a long service lifetime
- Elegant finless design
- Equipped with a Service tag, a QR-based identification system that makes each luminaire uniquely identifiable and provides maintenance, installation, and spare part information

Features

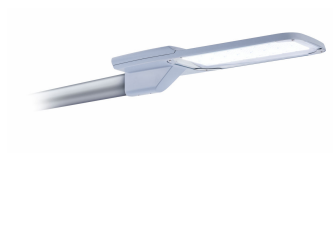
- System efficacy 140lm/W $\pm 10\%$
- Long service lifetime 100Khrs L70@Ta 35°C
- With 10kV or 15kV Surge protection Device

Application

- Pedestrian category roads (P1-P6)
- Vehicle category roads (M1-M6)
- Traffic routes and main access road
- Urban and residential area

GreenVision Xceed Gen2

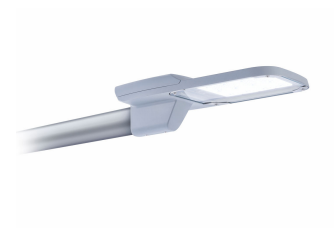
Versions



BRP383

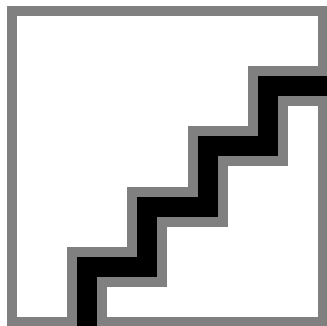
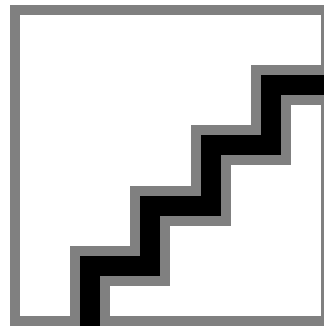
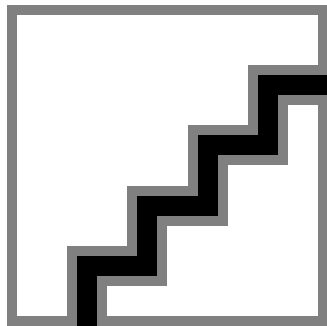


BRP381



BRP382

Dimensional drawing



GreenVision Xceed Gen2

General Information

Driver included	Yes
Light source replaceable	No

Light Technical

Optical cover/lens type	Polycarbonate micro lens optic
-------------------------	-----------------------------------

Controls and Dimming

Dimmable	Yes
----------	-----

Approval and Application

CE mark	CE mark
Flammability mark	For mounting on normally flammable surfaces
Mech. impact protection code	IK08

Application Conditions

Maximum dim level	10%
-------------------	-----

Light Technical

Order Code	Full Product Name	Light source color
911401874198	BRP383 LED386/NW 280W 220-240V DM PSR	740 neutral white
911401874498	BRP383 LED338/NW 240W 220-240V DM PSR	740 neutral white
911401874698	BRP383 LED315/NW 225W 220-240V DM PSR	740 neutral white
911401874898	BRP383 LED280/NW 200W 220-240V DM PSR	740 neutral white
911401875098	BRP383 LED243/NW 175W 220-240V DM PSR	740 neutral white
911401877098	BRP383 LED232/WW 175W 220-240V DM PSR	730 warm white
911401875698	BRP381 LED145/NW 105W 220-240V DM PSR	740 neutral white
911401875898	BRP381 LED122/NW 85W 220-240V DM PSR	740 neutral white
911401875998	BRP381 LED99/NW 70W 220-240V DM PSR	740 neutral white
911401877698	BRP381 LED138/WW 105W 220-240V DM PSR	730 warm white
911401878198	BRP381 LED75/NW 55W 220-240V DM PSR	740 neutral white
911401875398	BRP382 LED193/NW 140W 220-240V DM PSR	740 neutral white
911401877398	BRP382 LED184/WW 140W 220-240V DM PSR	730 warm white

