



Reach New Heights

A high lumen output and long-throw giant LED floodlight for fixed and dynamic architectural and facade lighting applications.

UniFlood G

UniFlood G is a giant, high power, rectangular-shaped and exterior-rated architectural LED floodlight that is designed for façade, landscape and outdoor flood lighting applications. The robust mechanical design and highly efficient optical design make it ideal for illuminating high storey exterior facades, bridges, landmarks and monuments. Available in white, monochromatic colours, RGB, RGBW and tunable white. Eight different spread lenses ranging from narrow spot, to wide flood and a DMX512/RDM control option available to give architects and designers the freedom to explore a wide range of concepts and design with no limitations.

Benefits

- Long-throw: 1 foot-candle at up to 445 m (4,000 K, 3.5° lens)
- Robust design and IP66 rated for outdoor use
- Wide Range of Beam Angles from Narrow Spot to Wide Flood

UniFlood G

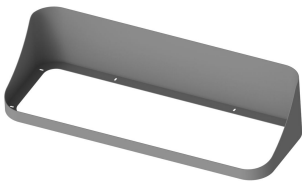
Features

- Standard: RGBW, RGB, 2,700 K, 3,000 K and 4,000 K
- Optional: 5,000 K, monochromatic colours, RGBA and tunable white
- Available in DMX512/RDM control interface option
- Available in 8 optical distributions from narrow spot to wide flood

Application

- Bridges, Monuments, Facades
- Landscaping
- Parks and plazas

Accessories



Ordercode 911401779632

