

# Simple, robust magnetic ballast

## HID-Basic ballasts for HPL and HPI(PLUS) lamps

The HID-Basic ballast is an impregnated (HID standard) electromagnetic ballast for HID lamps, for use in combination with an external ignitor.

### Benefits

- Limited volume of ballast coil; also lightweight
- Simple installation and cabling

### Features

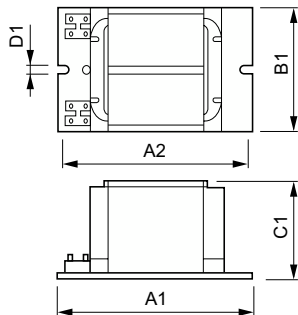
- Orthocyclic winding process
- Ballasts equipped with screw terminal blocks as standard
- Earthing-while-mounting facility (HID Standard ballasts)
- Low wattage losses

### Application

- For built-in applications for road and public lighting with HPL, HPI and HPI (Plus) lamps
- HID-Basic ballasts should be restricted to built-in situations where relative humidity is limited.

## HID-Basic ballasts for HPL and HPI(PLUS) lamps

### Dimensional drawing



| Product       | D1     | C1      | A1       | A2       | B1      |
|---------------|--------|---------|----------|----------|---------|
| BHL 400L 202  | 6.3 mm | 64.5 mm | 150.0 mm | 134.0 mm | 75.5 mm |
| BHLE 400L 202 | 6.2 mm | 64.5 mm | 165.0 mm | 144.0 mm | 75.5 mm |

